

Ishikawa's Dynamic Conservation of GIAHS “Noto's Satoyama and Satoumi”



Shiroyone-Senmaida

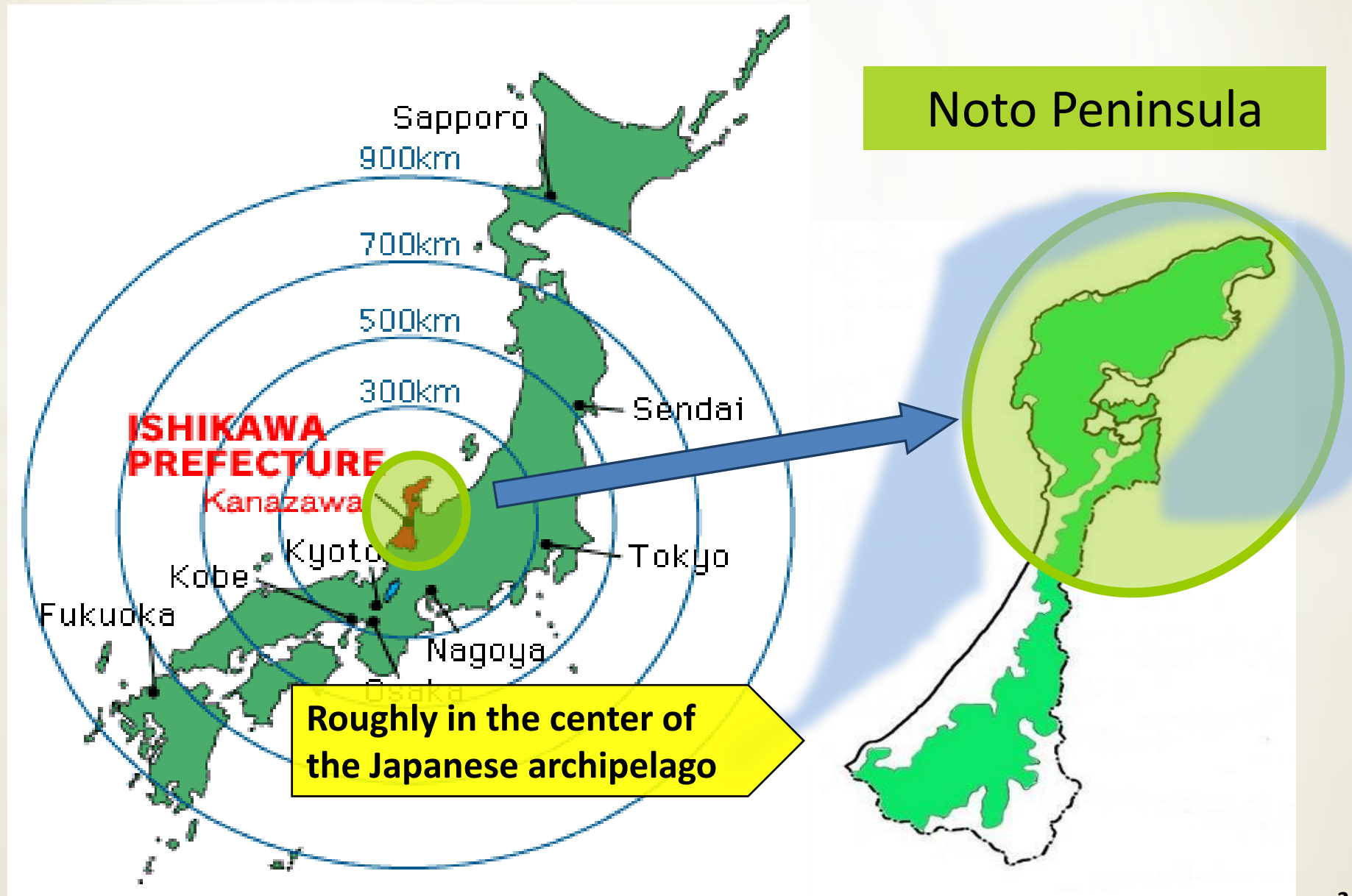
Fumikazu NOTO

Agriculture, Forestry and Fisheries Department, Satoyama Promotion Office,

Ishikawa Prefecture

June 14, 2016

Location of “Noto’s Satoyama and Satoumi”





Gold leaf



Kenrokuen Garden



Kanazawa Castle Park



Higashi Chaya District

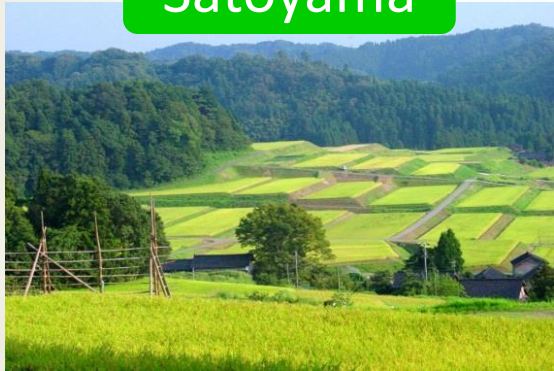


Kaga Cooking

What is Satoyama and Satoumi ?



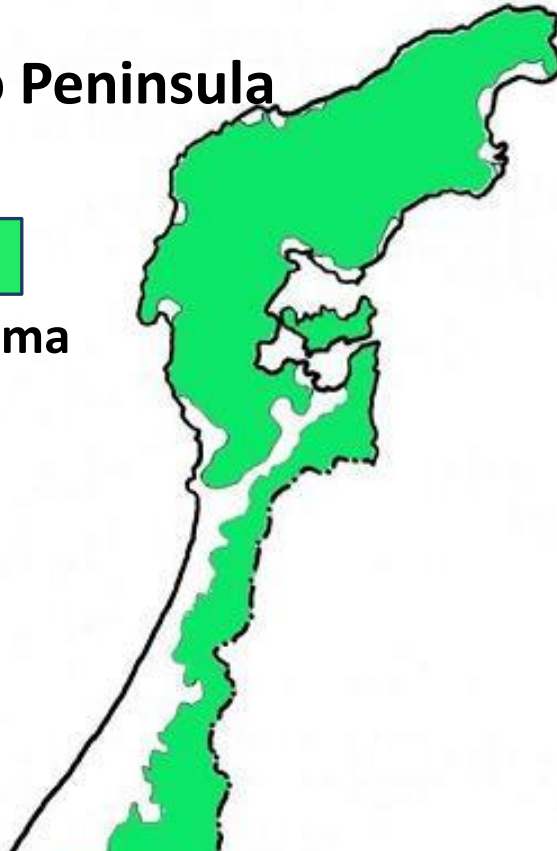
Satoyama



Satoyama refers to regions formed over many years by the agriculture and forestry industries of local inhabitants.

Noto Peninsula


Satoyama



About 60 percent of Ishikawa Prefecture is composed of Satoyama.

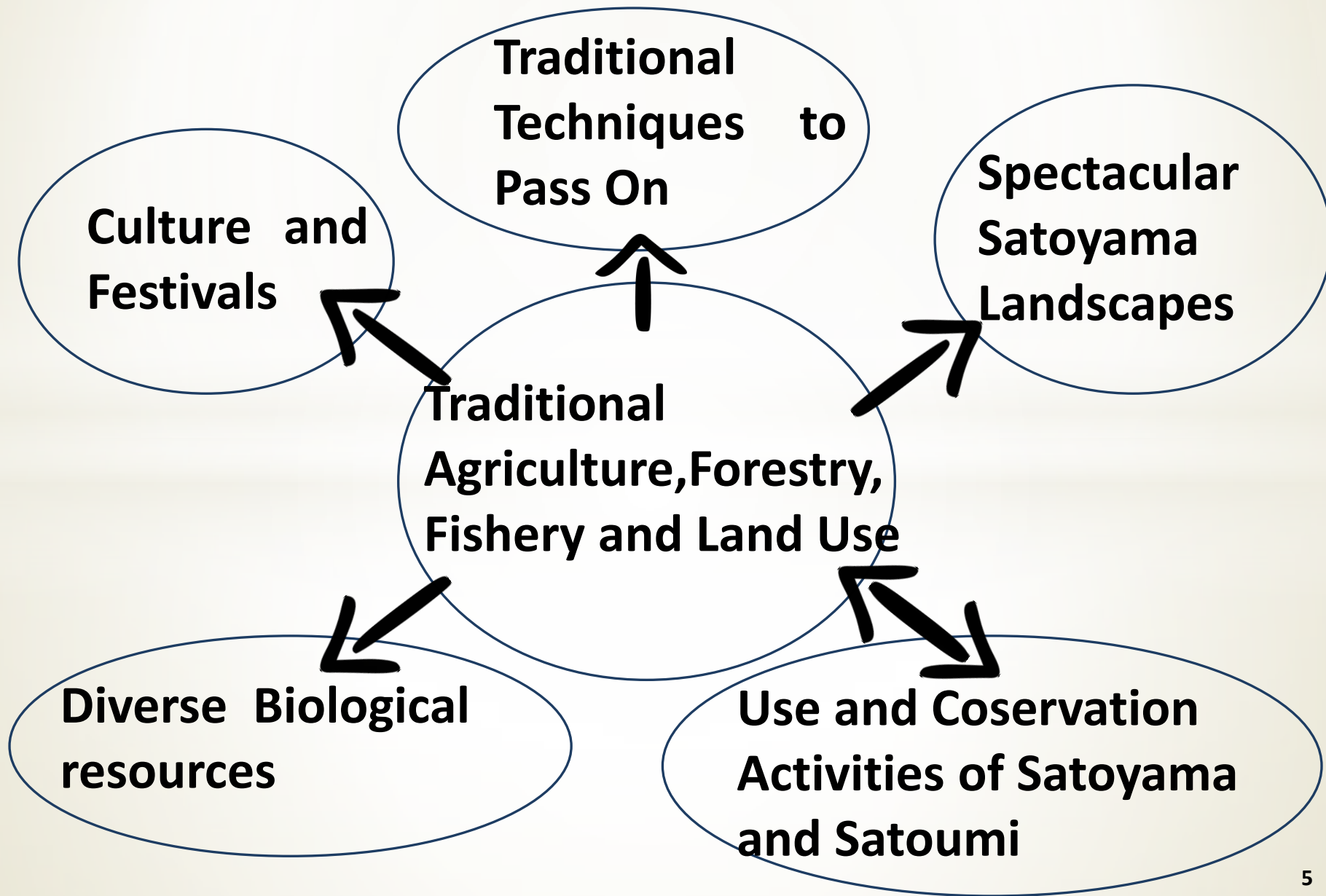


Satoumi



Satoumi refers to coastal and marine regions that are connected with the lives and livelihoods of the local inhabitants.

“Noto’s Satoyama and Satoumi” that points has been evaluated



Agriculture, Forestry and Fishery

Rice paddies making use of mountain slopes



Forests in the hills behind the fields



Charcoal

Shiitake mushrooms



Rice by natural drying



Irrigation ponds

Women skin divers "Ama"



Traditional Festivals and Techniques

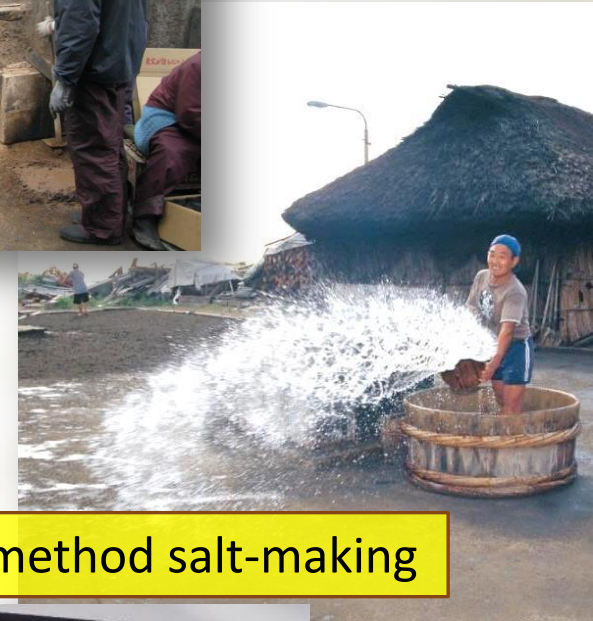
Kiriko lantern float festivals



Charcoal making



Aenokoto ritual



Agehama method salt-making



Wajima lacquerware

Landscape



Terraced rice paddies

Aerial view of terraced rice paddies carved into a steep hillside, overlooking the ocean. The terraces are filled with water, reflecting the sky, and are surrounded by lush green vegetation.



Japan's original landscapes in rural areas

A wide view of a rural landscape in Japan, featuring a large traditional house with a black roof and white walls, surrounded by green fields and trees.



Traditional houses built with white walls and black roof tiles

A view of traditional Japanese houses with white walls and black roof tiles, situated in a rural area with green fields and trees.

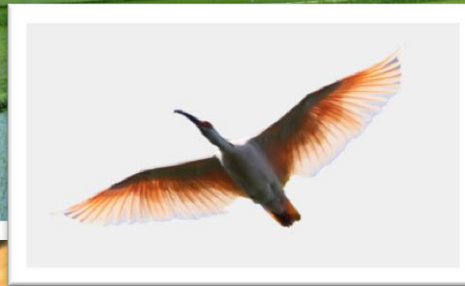


Bamboo fences "Magaki"

A view of a road in a rural area, featuring a long, low bamboo fence (Magaki) running along the side of the road, with traditional houses and trees in the background.

Biodiversity

The irrigation canals that connect the rice field, reservoirs and forests create a unique eco-system



Many living organisms including rare and endangered flora and fauna

Crises of “Noto’s Satoyama and Satoumi”

The average age of farmers continues to rise.

Youths are flocking to the big cities.

Deterioration of Satoyama



Abandoned farm land



Abandoned artificial forests

To regain the vitality to Noto region, it is important to promote agriculture, forestry and fishery in Noto.

Ishikawa Satoyama Promotion Fund

• Ishikawa Pref.
• Financial institutions

Fund

Ishikawa
Satoyama
Promotion Fund

Fund total
100 million
US dollar

Investments

Supporting Satoyama
promotion activities

Organic vegetables



Organic Soba



Farm-inn₁₁

Study of Biodiversity



Investigations of the creatures with children and local inhabitants develop the understandings of their local environments and the importance of Satoyama's biodiversity.

**Number of the investigations of the creatures
(2011-14);282**

New Value Chains

“Noto-no-Ippin” (2014～)

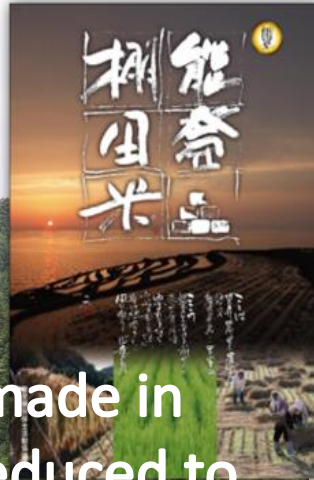
The 32 products named “Noto-no-Ippin” are made in “Noto”.
(Example; Agehama Salt, Turban Shell picked by Ama, Persimmons, Etc)



“Noto-no-Ippin” contributes to conservation of GIAHS, promotions of tourism and businesses in Noto.

Voluntary Efforts by Rice-farmers in Noto

NotoTanadamai Rice



The rice that are made in North Noto and reduced to half of the quantity of pesticide and chemical fertilizer

A part of the profit

Use for Rice terraces conservation activities

Spread to the whole Noto Area

Notomai Rice



The Effects that are certified to the GIAHS site

Improvement of the value of
Noto's agricultural products

Free of the "Noto Satoyama
highway", etc

Business advances to Noto



Revitalization of Noto's
economics

The number of "New" farmers
2009:24 → 2014:43

International Forum in Noto



- ▶ May 29, 2013-June 1
- ▶ Participants 600 people
(500 people from Japan,
100 people from 20 countries)
- ▶ Overview
 - The first time in Japan,
The first time in recognition area
 - 6 regional recognition
 - Adopted the “Noto Communique”

“Noto Communique”

- Conduct monitoring
- Support the recognition of developed countries
- Promote the twinning of GIAHS sites between developed and developing countries etc



International Cooperation

International cooperation by Ishikawa Pref. (2014-)



2014: Bhutan government official
2015: Cambodia, Indonesia,
Vietnam government officials



Ifugao Satoyama Meister training program(2014-)

Noto Satoyama Airport

Kanazawa

Haneda Airport — Noto Satoyama Airport
About 1 hour

Tokyo Station — Kanazawa Station
About 2.5 hours

Shiroyone-Senmaida (Night event)