

2015 GNH Conference

November 6, 2015

'From GNH Philosophy to Praxis and Policy'

Paro, Bhutan

An Initiative for Sustainable Development Policy in Chungnam Province

The Province We Want toward 2030

Jong-Gwan JUNG



CONTENTS IN A NUTSHELL

1. Introduction

2. Methods

3. Results and Discussion

4. Lessons Learnt

Introduction

◆ Planning Process

- Planning involves setting objectives, gathering and analyzing information, and formulating and evaluating alternative policies, plans, programs, of projects to meet the objectives.
- ◆ Korean framework for mutual nexus planning between National Land and Environment
- Ministry of Environment, Ministry of Land Infrastructure and Transport have agreed to strengthen the linkage in reciprocal collaboration for the reflection of planning process.

Introduction

- ◆ **Planning between National Land and Environment**
- **Land plan** has addressed the eco-friendly articles in the guideline for **urban and county basic spatial plan**. Equally **environmental plan** includes the firm-up provisions of **spatial structures and functional role of the land use plan**.
- To support the nexus system, we set up the conflict mediation unit in the **policy coordination** side and **sharing the basic information data tools and sets**.

Methods

◆ Chungnam Provincial Government

- had built up **biotope mapping tools**, for the application of spatial planning of local environmental data sets.
- This spatial environmental information system is composed of precise map drawn on a scale of 1:5,000. And it has included **natural resources value and land use attributes information**.
- By doing feedback process, we can extend the usefulness of **local biotope mapping tools for decision support** on the basis of rational planning context.

Methods

**Environmental
Planning**

Land use

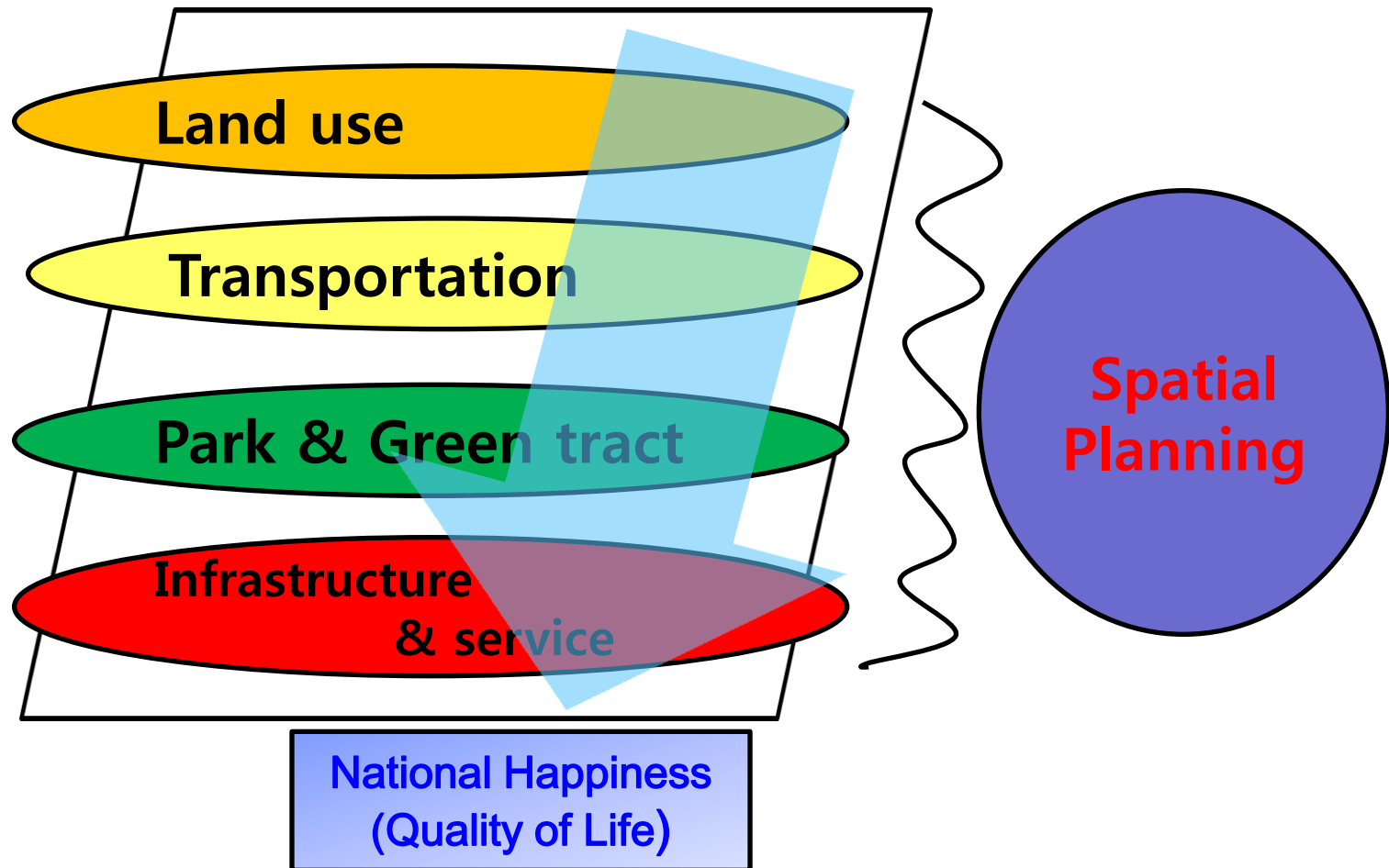
Transportation

Park & Green tract

**Infrastructure
& service**

**National Happiness
(Quality of Life)**

**Spatial
Planning**



Methods

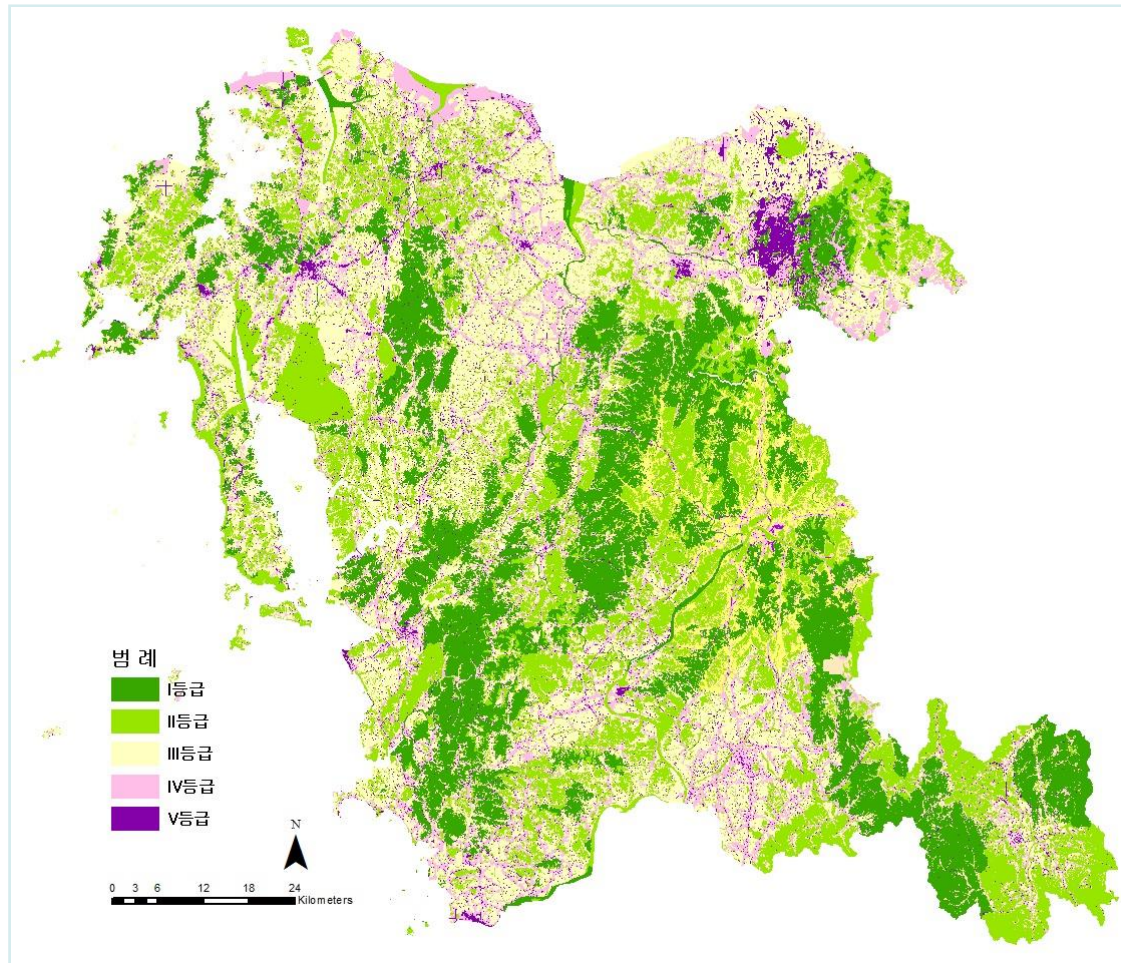
◆ Environmental Planning

- process of planning to environmental protection and problem solving. Therefore it can be summarized its attributes as **reactive, proactive, and integrative**.

◆ National Land Planning

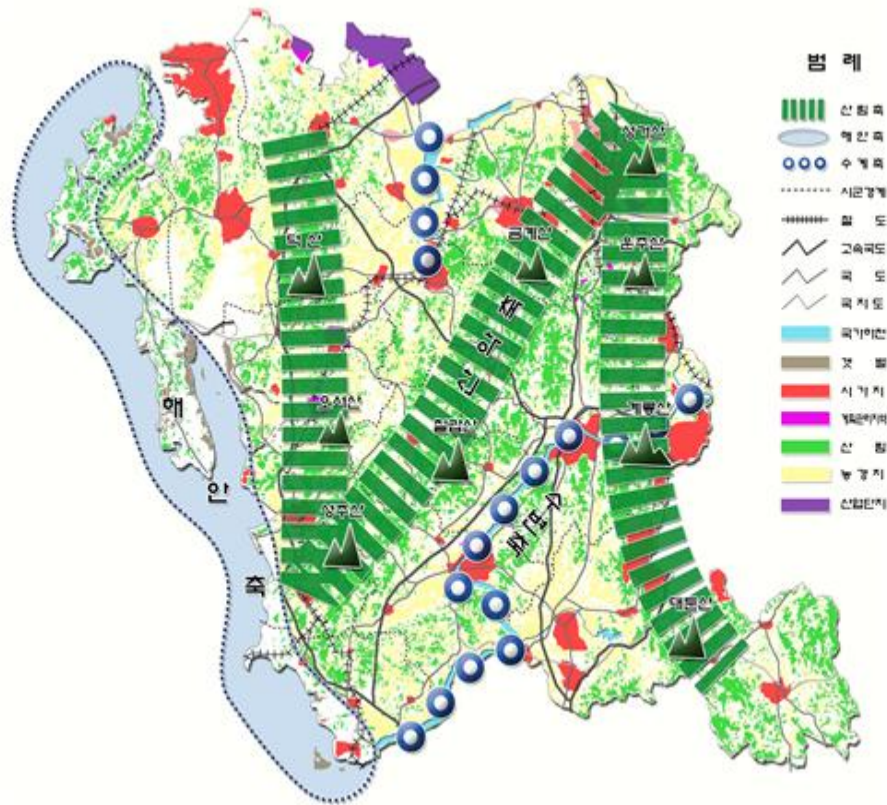
- based on the complex interdisciplinary field that integrates the diverse perspectives of science, policy and design. Some of it is elusive including **sustainability and quality of life**, and some of the process elements are **comprehensive**.

Methods



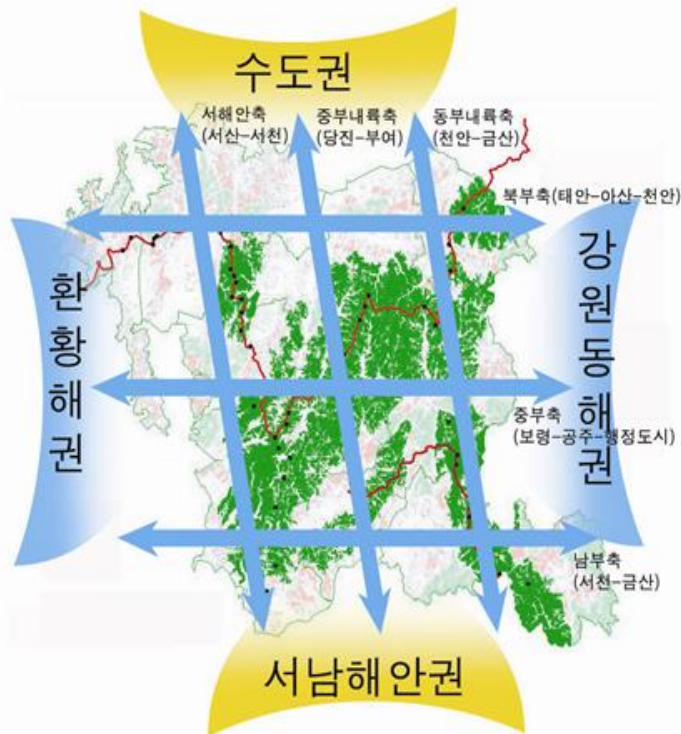
Biotope mapping

Methods



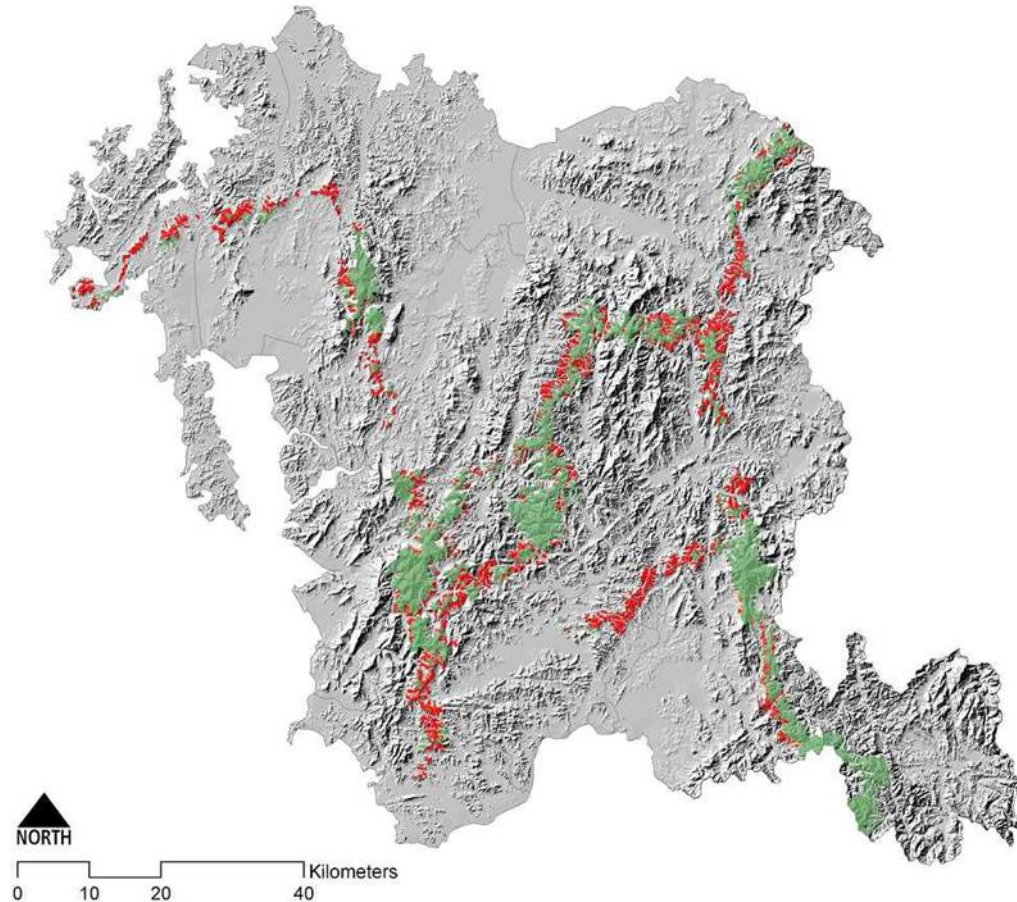
Major Axis of Provincial Area for
Land and Environmental Planning

Results and Discussion



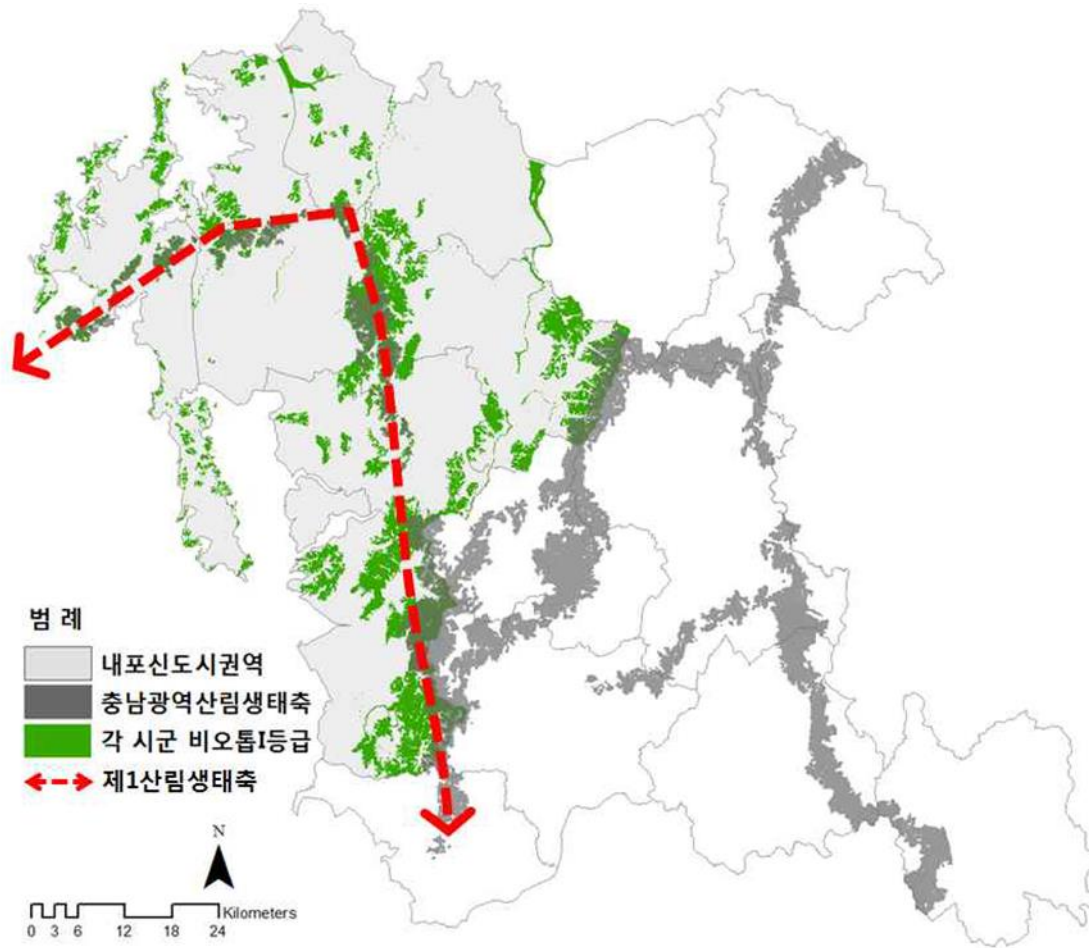
Development Axis based on Eco-axis with Biotope mapping

Results and Discussion



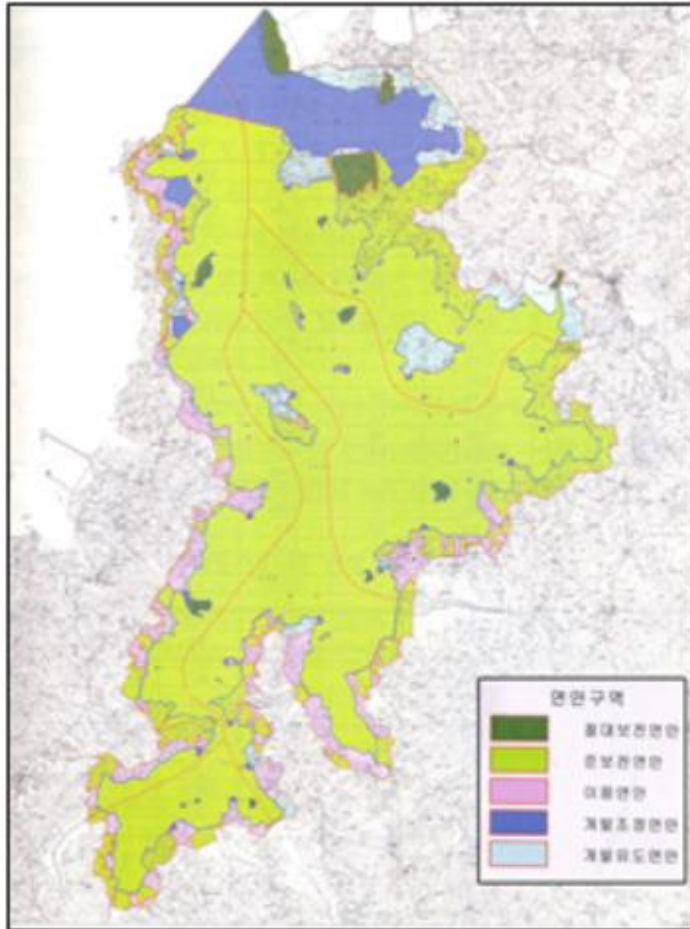
Forest Conservation Eco-Axis

Results and Discussion



Naepo Primary Eco-Axis

Results and Discussion



Coastal Management Plan(2005)
Designation of Garorim Bay



Chungnam Provincial Plan(2012)
Coordination of Contradicted Plan

Results and Discussion

Problems

Land policy

- Preference of economic efficiency
- Inadequate measure to natural degradation
- Post management on environmental problems

Environmental policy

- Sectoral approach & post measure
- Short term effect & lack of linkage
- Focused on protected object

Cause of discordance

- Promotion of policy separately
- Awkward arrangement of policy and plan
- Absence of harmonizing performance means and basic information

Precondition of collaboration

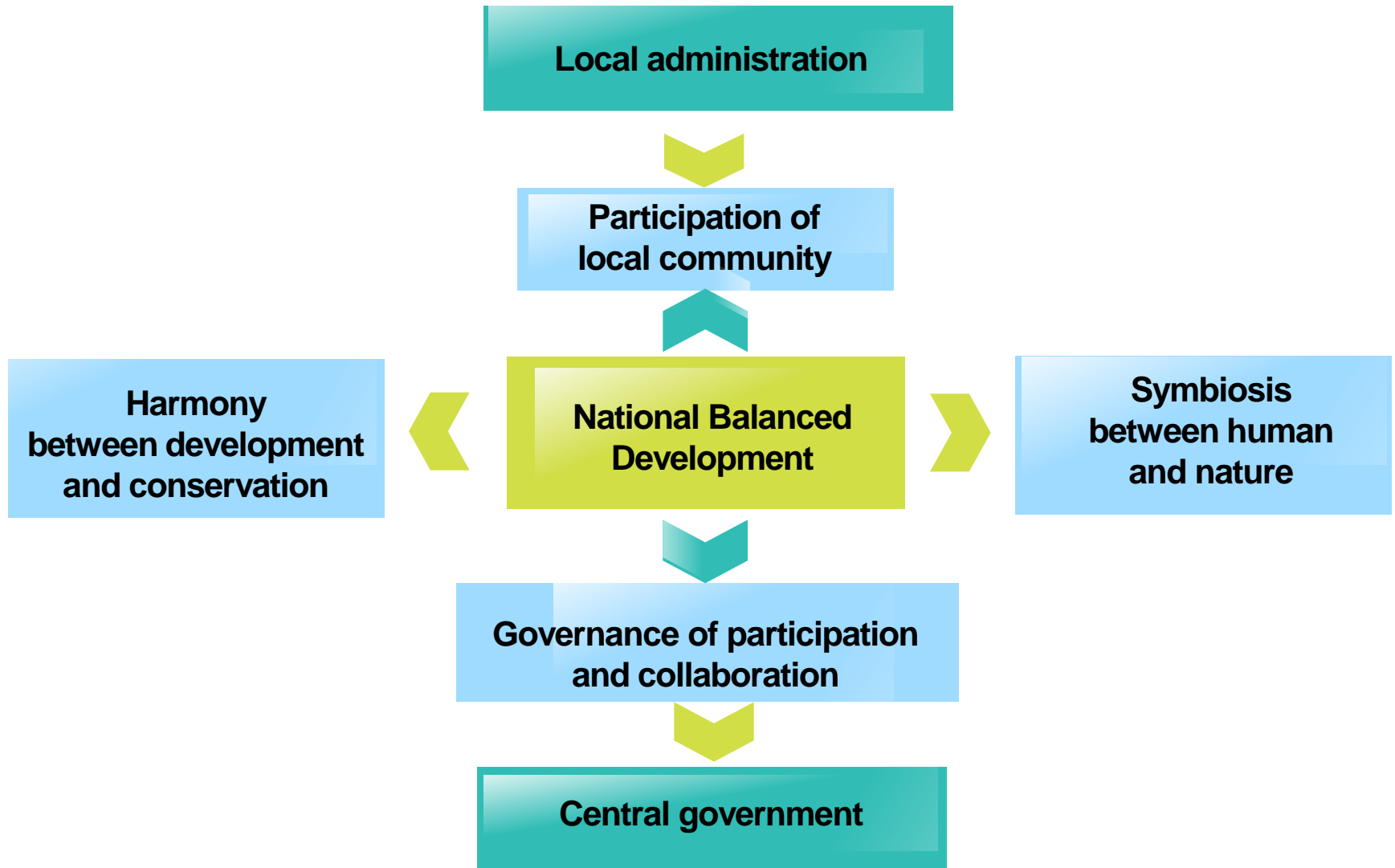
- Paradigm shift to policy
- Provision of integration, linkage and collaboration circumstance

Subject of collaboration

- Planning structure based on environment
 - Institutional improvement for eco-friendly land use
 - Securement of practical effectiveness
-
- Spatialization of EP
 - Preparation of measure by local autonomy
 - Securement of practical execution in EIA

- Linkage between LP & EP
- Collaborative planning based on ESS
- Common preparation for performing measure

Results and Discussion



Results and Discussion

◆ Process for Environmental Planning

1. Scoping
2. Identification of issues, Opportunities, Concerns, Objectives, Criteria, Uncertainties
3. Formulation of Alternatives
4. Assessment of Impacts
5. Evaluation and Choice of Plan
6. Implementation, Monitoring, Evaluation, Modification

Results and Discussion

◆ Simplified Planning Process

1. Inventory ; *What do we have?*
2. Needs Assessment ; *What are our problems, objectives, priorities?*
3. Management Strategies, Plans, Programs ; *What should we do?*
4. Implementation and Monitoring ; *Let's do it!*
And learn from it!

Lessons Learnt

◆ EIA Process

- comprised three distinct phases; **scoping, strategic assessment, and sustainability** framework.
- **biotope mapping** is a useful tool for mutual linkage between national land and environmental planning.

◆ Planning Process

- to stand these conceptual, scientific, and procedural challenges to approach its inherent goals; mitigating effects of development, achieving more livable and **eco-friendly environmental systems**.

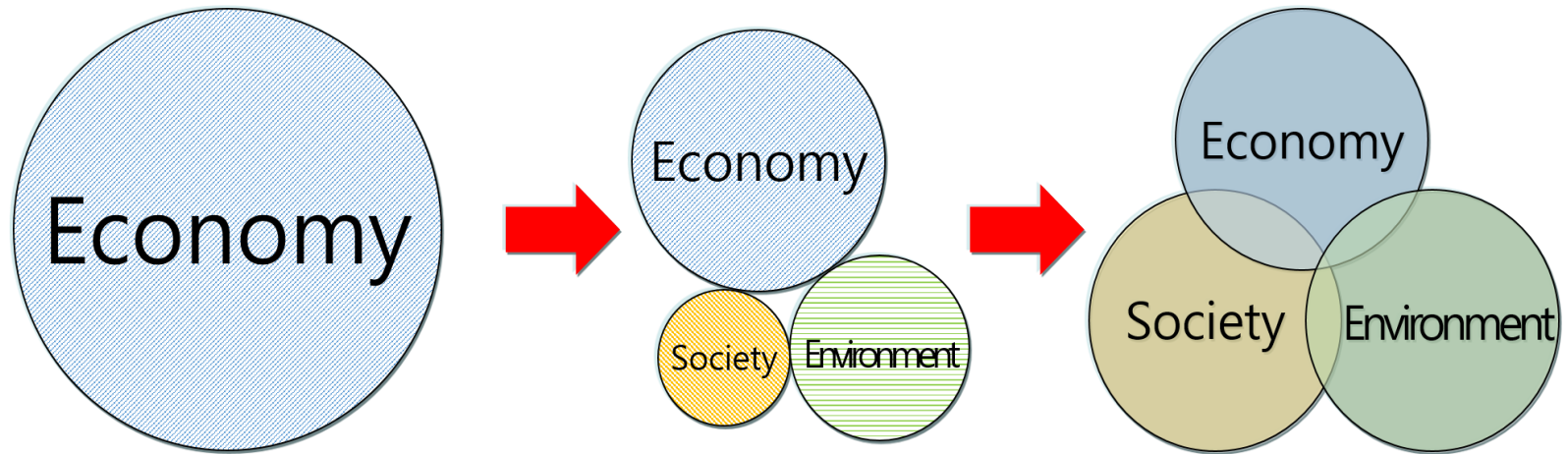
Lessons Learnt

◆ Environmental Land Use Planning;

Community-based Environmental Planning Principle

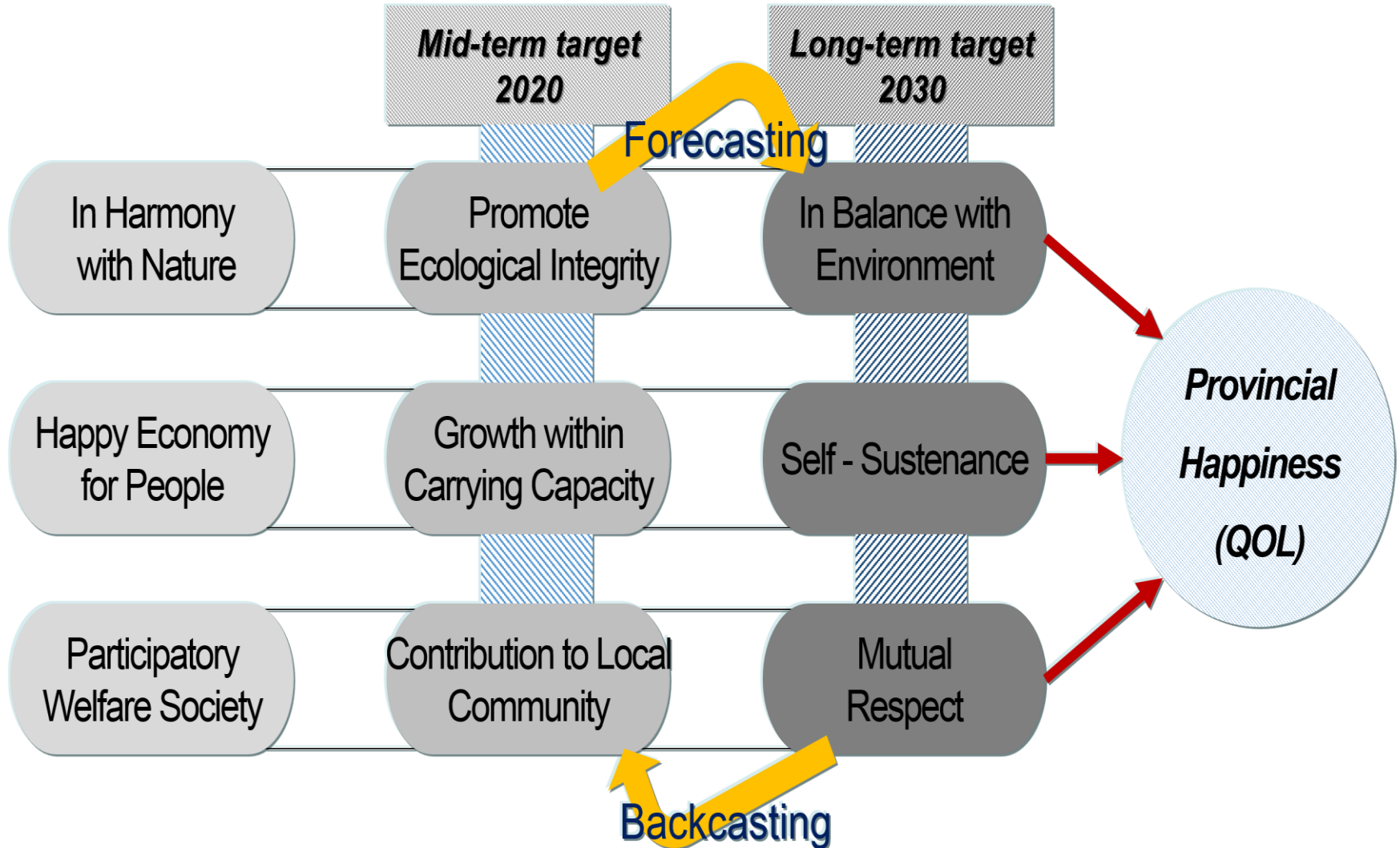
1. Focusing on a definable geographic place, usually a community
2. Working collaboratively with all stakeholders through partnership
3. Assessing, managing quality of environment and resources in the place
4. Integrating environmental, economic and social objectives
5. Monitoring and reducing efforts through adaptive management

Lessons Learnt

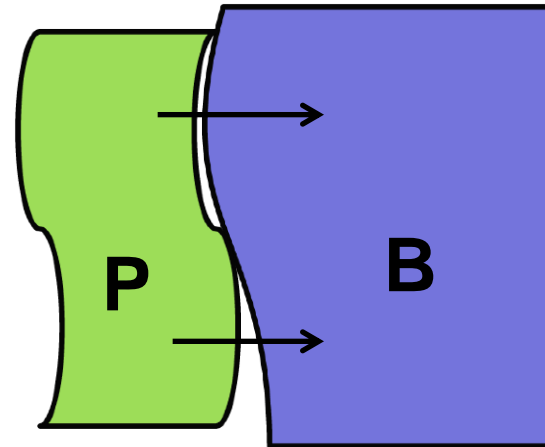
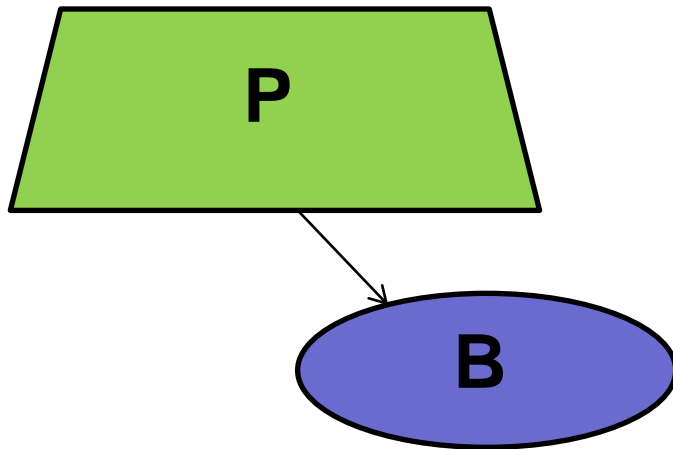
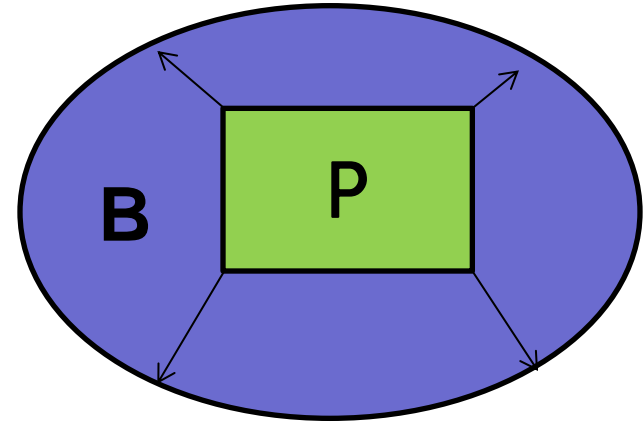
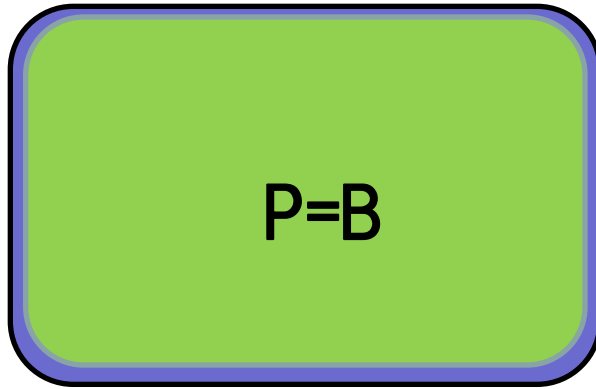


Context Shift for Sustainable Development Goals (SDGs) toward 2030

Lessons Learnt



Lessons Learnt (Application of PES)



Lessons Learnt

- Korea has devised a plan of the **3rd National Strategies for Biodiversity** (2014~18), which coming up with the vision and strategic goals for the enhancement of biodiversity.
- Act of Conservation and Application of Biodiversity, according to the legal comprehensive plan.
- Chungnam Provincial Governor Hee-Jung Ahn presented his initiative to introduce a new system of **Payment for Ecosystem Services (PES)** at the press release on March 20, 2014.
- It is required that to select the objects to represent the region in advance, and then set the goals to conserve and appropriate evaluation index methods to assess.
- In this case it is necessary to fulfill the **basic studies, design of index, and setup of system to the PES, biodiversity offsets and bio-banking systems.**

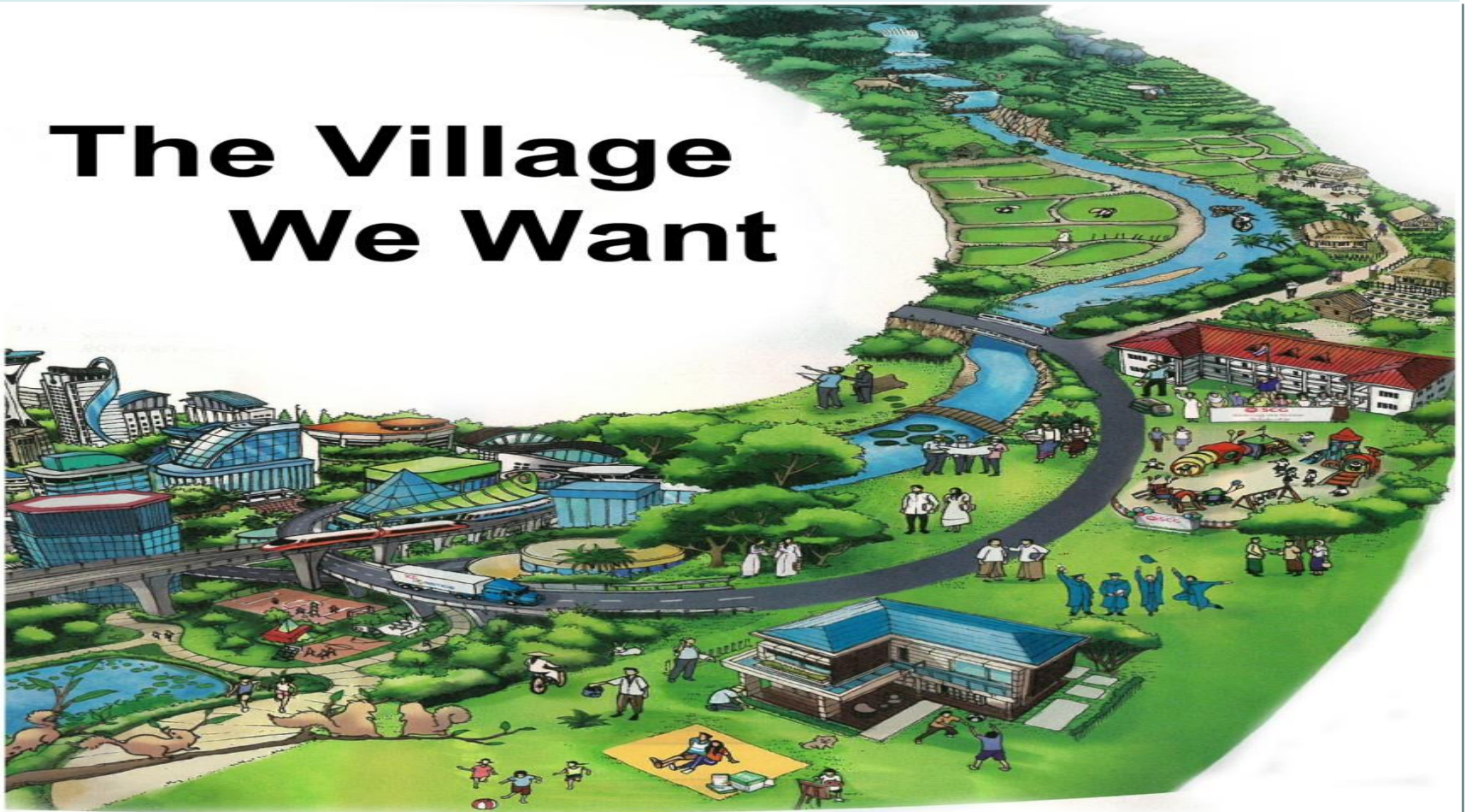
Lessons Learnt

Key findings and conclusions to seek living together with nature in accordance with TEEB's approach and processes in Chungnam Province include;

- 1. Recognizing value:** a feature of all human societies and communities
- 2. Demonstrating value:** in economic terms, to support decision making
- 3. Capturing value:** introduce mechanisms that incorporate the values of ecosystems into decision making

Lessons Learnt

The Village We Want



GET HAPPY! IT'S GOOD FOR YOU!

Heart of Korea

행복한 변화, 새로운 창남

