

A Basic Study on Establishment of Area for Korea' s Agricultural Heritage System(KIAHS)

2016. 6. 14.

Dr. Beak Seung-Seok
beakseungseok@gmail.com



Koera Rural Community Corporation

Table of Content

I

Introduction

II

**Study Method
/Procedure**

III

Study Result

IV

Conclusion



Introduction

- **Korea has established KIAHS in 2012.**
 - 9 KIAHS starting with Cheongsando Gudeuljangnon designation.
- **Higher interest in AHS vs. more damages being found**
 - Hasted development with no AHS value consideration but meeting the higher demand of tourism resource development
- **Damages in Cultural Heritage and its landscape occurred in 1970s**
 - Cultural Heritage Protection Law designate Conservation Area and Historic Cultural Environment Preservation Area distinctively
- **KIAHS designate CORE AREA and its SURROUNDING AREA for conservation and management**
 - But, detailed guideline hasn't been introduced yet to separate core area and its surrounding area



Introduction

- **The study has suggested a direction for KIAHS Area Designation for the effective conservation/management/utilization**
 - Such can be applied for KIAHS designation criteria of core area and its surrounding area and activity guidelines for the conservation and management.



Study Method/Procedure

- **1st, the study has reviewed the area designation method thru Culture and Ecological Heritage Area designations.**
 - Related Law and Notice of Ministry of Environment/Cultural Heritage Administration
- **2nd, the study drew out the key issues on KIAHS area designation d
esignated cases.**
- **3rd, sound direction for KIAHS area designation has been suggested**



Study Result

1. Heritage Designations in Korea

Scenic Attraction Spot

- **A site with outstanding landscape and artistic value**
 - Share similar spatial extent with AHS

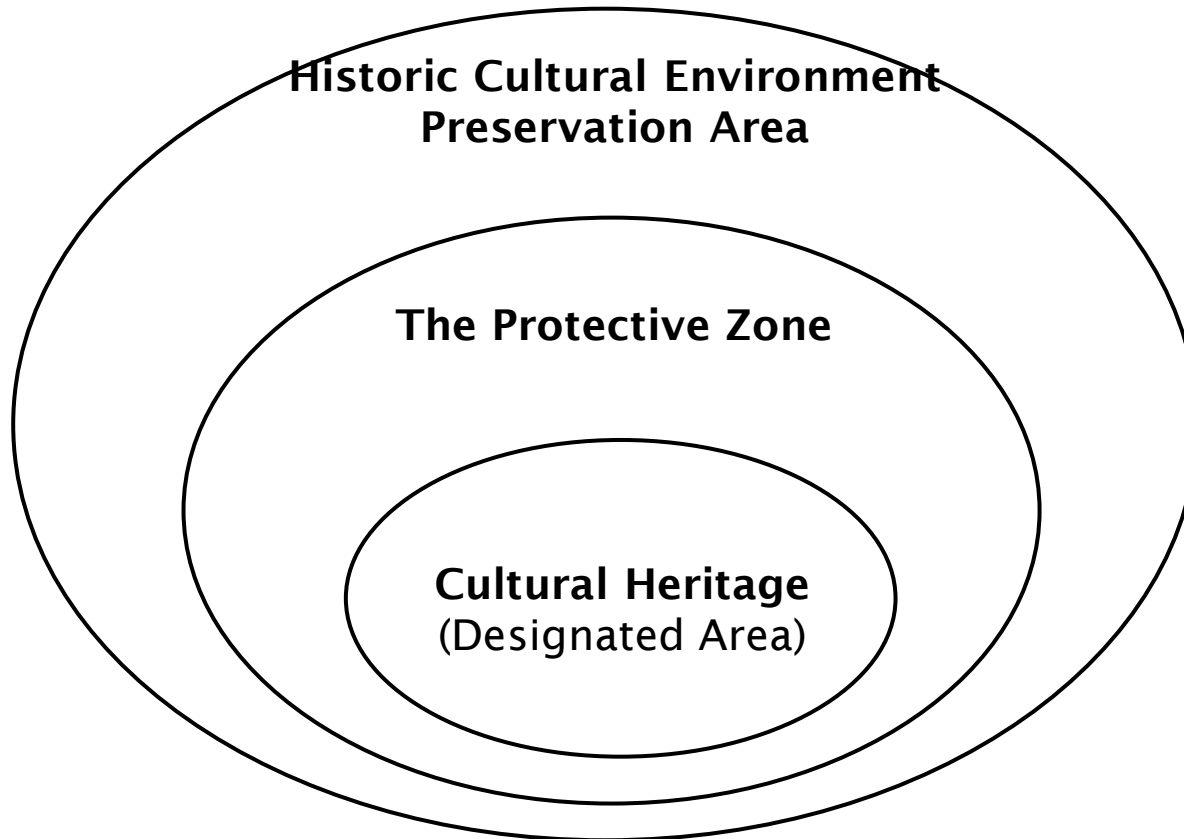


- **Designation of Historic Cultural Environment Preservation Area**
 - Objects for a conservation-needed Cultural Heritage and landscape with historic/cultural value
 - Cultural Heritage and within 500m of boundary line of preservation Area, however can exceed the guideline if needed



Study Result

Cultural Heritage Area Classfication



III

Study Result

Scenic Attraction : Yecheon Hoiryongpo

- **Designated as Scenic Attraction for landscape of agriculture and environment**
 - 7 households community in the stream area still celebrate unique agro-culture



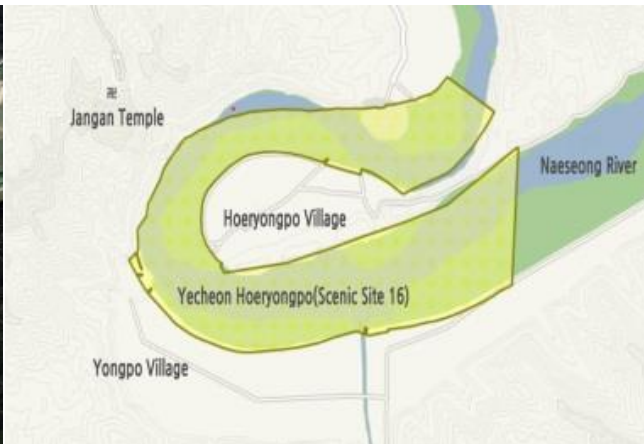


Study Result

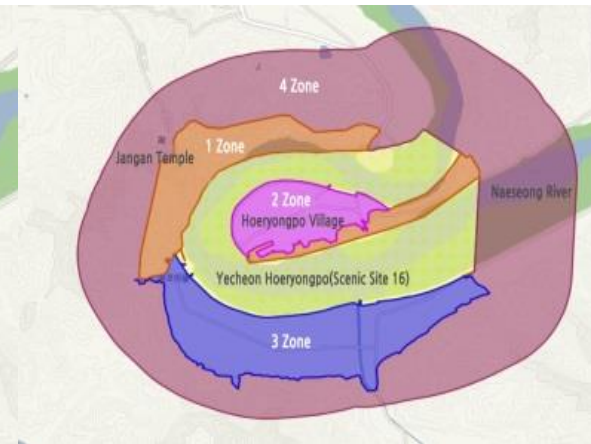
- Yecheon Hoiryongpo in incised meander shape is located in upper part of Nakdong River, and 790,864m² of beach area has been designated for Scenic Attraction
 - Scenic Attraction includes designation of Historic Cultural Environment Preservation Area, including village, forest, stream and cultivation area within 500m boundary line.



Yecheon Hoiryongpo



Designated Scenic Attraction



**Historic Cultural Environment
Preservation Area**



Study Result

• Activity Guideline in Hoiryongpo Historic Cultural Environment Preservation Area

- Maximum Height for new building in community and cultivation area: under 8-12m
- Roof color: black, gray, brown for harmony with environment

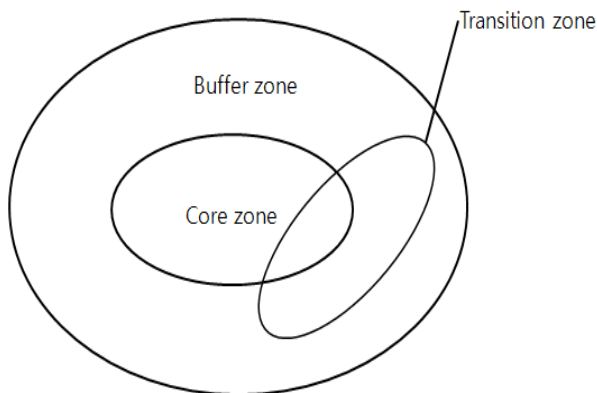
Type	Acceptable standards	
	Flat roof	Inclined roof(over 10:3 rate)
Zone 1	○ Individual review	
Zone 2		○ Maximum height under 12m
	○ Roof color: limited to stay within black, gray, dark blue or brown	
Zone 3	○ Maximum height under 8m	○ Maximum height under 12m
Zone 4	○ Apply Yecheon Town Planning Ordinance or relevant rules	
Common	○ Remodeling is permitted for existing buildings only. ○ Individual review is required for a bldg with over 25m side or over 330m ² in gross size(applied for the zone with under 8m flat roof or 12m inclined roof limitation) ○ Post notification, any amendment for the historic cultural environment conservation area within Town Plan application is subject for pre-discussions with Director of Cultural Asset Administration Division.	



Study Result

Ecology·Landscape Conservation Area

- **Area with abundant biodiversity and outstanding landscape**
 - Area, holding environment with aboriginality and biodiversity for conservation and academic research value
 - Area with clear geological features/topography in its landscape for conservation and academic research value



Core Zone: requires protection of ecological structure/function

Buffer Zone: needed area to protect Core Zone

Transition Zone: Community within core zone and buffer zone

III

Study Result

Ecology·Landscape Conservation Area : Uljin Wangpicheon

- **Designated Ecology·Landscape Conservation Area for its outstanding vegetation and landscape**
 - Endangered species of otter, mountain goat and rare wild animal are found.





Study Result

- **Designated area: 102.84km² including land and stream**

- **Conservation per core zone, buffer zone, transition zone**

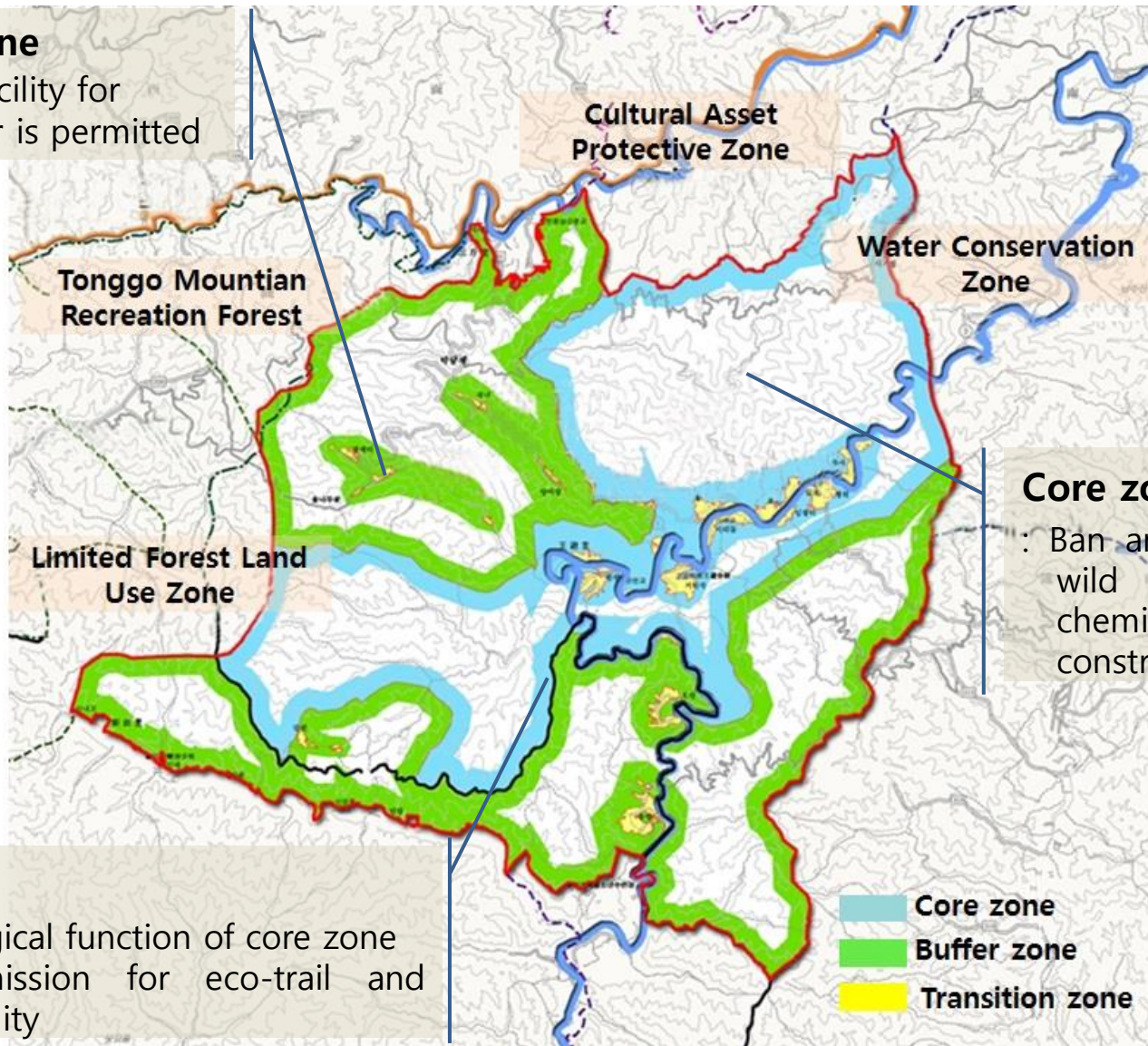
Type	Total	Core zone	Buffer zone	Transition zone
Extent	102.84km ²	45.35km ²	55.64km ²	1.85km ²
Ratio	100%	44.1%	54.11%	1.8%
designation	-	2005. 10	2006. 12	2006. 12
zone	-	core conservation area in Wangpicheon	Near core zone	Community within the ec ological landscape conser vation area
Area	-	Uljin-gun Geumgangsong-m youn~Wangpi-ri Geumnam- myoun Gusan-ri, part of Sug ok-ri	Geumgangsong-myoun W angpi-ri, Samgeun-ri, Youn gyang-gun Subi-myoun Su ha-ri Sinam-ri	Uljin-gun Geumgangsong -myoun Wangpi-ri, Young yang-gun Subi-myoun Su ha-ri, Sinam-ri



Study Result

Transition zone

: Convenient facility for resident/visitor is permitted



Core zone

: Ban any poach/collect of wild life, poisonous chemical, fertilizer, new construcion

Buffer zone

: Protect ecological function of core zone
limited permission for eco-trail and education facility

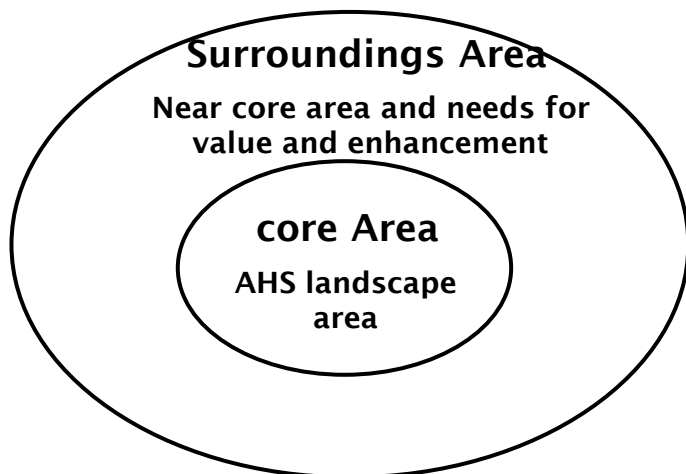


Study Result

2. KIAHS area designation

KIAHS

- **Protect Biodiversity, traditional farming skill, agri-culture and landscape of agricultural system**
 - KIAHS: 9 site designated by 2015
 - KIAHS: Technical type and Crop type (BEAK. S. S, 2015)



Core Area : Traditional farming system/Landscape
Conservation Area/directly related area
to Heritage conservation

Surroundings Area: near core area and needs for the
value of core area and enhancement
(MAFRA, 2012)¹⁵



Study Result

- **Unequal distinction of KIAHS core area from its surrounding area**
 - Technical Type shows distinction between core and its surrounding area
 - Crop Type is designated as one site

Type	Technical type					Crop type			
	Gudeulj angnon	Jeju Batdam	Mud boat	Jukbyan gnyoum	Jeju Haenyeo	Sansuyu(C ornus officinalis) agriculture	Bamboo -forest	Insam agriculture	Traditional tea agriculture
Core area	○	○	○	○	○	○	○	○	○
Surroun ding area	×	○	○	○	×	×	×	×	×

III

Study Result

KIAHS : Namhae Jukbyangnyoum

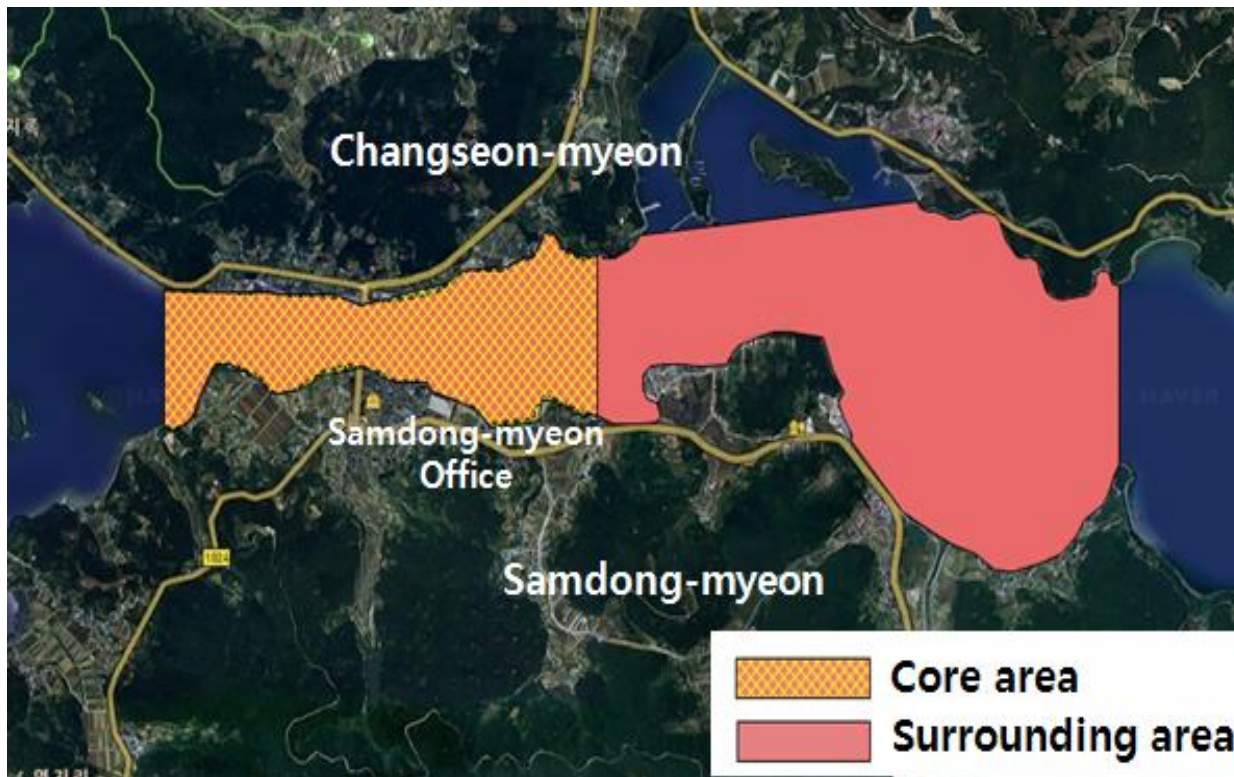
- **Over 500 year eco-friend fishery system, using tidal gap**
 - Traditional fishing system , utilizing principles of nature and environmental adaptation
 - 23 Jukbyangnyoum system remained



III

Study Result

- **Designated area: 5.372km²**
 - Core area holds concentration of 15 Jukbyangnyoum
 - 8 Jukbyangnyoum distributed in the Surrounding area



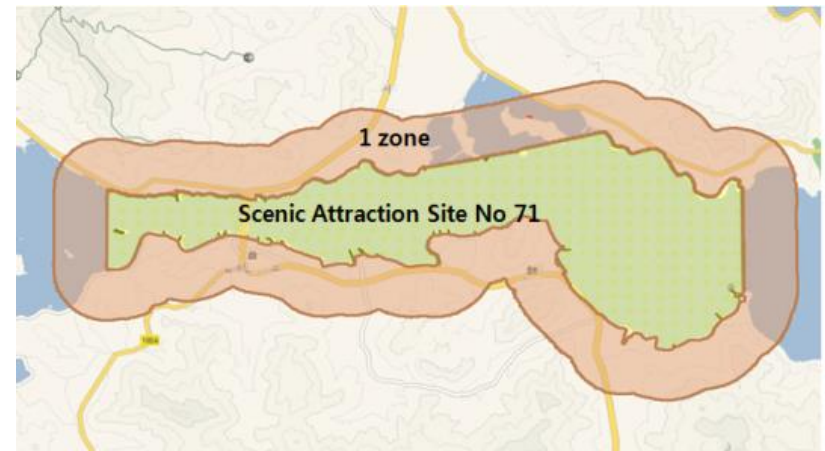


Study Result

- **Namhae Jukbyangnyoum was designated as Scenic Attraction in 2010**
 - Designated area: distribution of Jukbyangnyoum in 5.372km²
 - Designated Historic Cultural Environment Preservation Area: within 500m boundary line



Designated Scenic Attraction



Historic Cultural Environment Conservation Area

- **AHS includes farming/fishing, traditional tech and skill, biodiversity, culture, landscape**
- **Heritage designation includes smaller site than Scenic Attraction, core area includes partial Jukbyangnyoum only, and fishing village was excluded from Heritage**

III

Study Result

KIAHS: Gurye Sansuyu(*Cornus officinalis*) agriculture

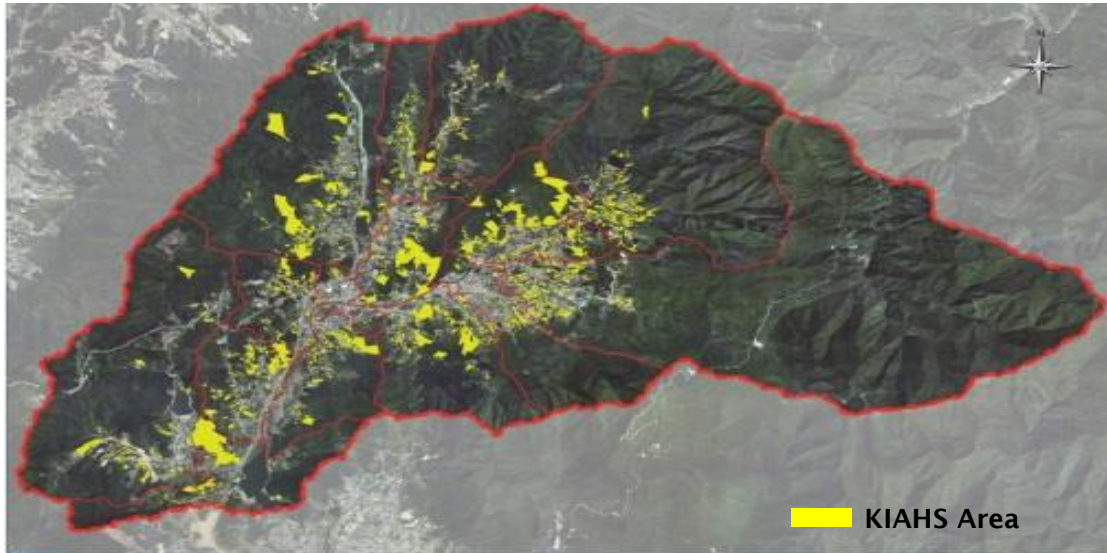
- Forest forms 82.8% of area and people's livelihood was supported by Sansuyu(*Cornus officinalis*) agriculture
 - Sansuyu agriculture has begun in 11th century
 - Sansuyu colony forms outstanding landscape with community, stone fence and people





Study Result

- **Designated area: 2.69km²**
 - Heritage designated without distinction between core area vs. surrounding area
 - Heritage area includes Sansuyu colony and stone fence



- **For heritage maintenance of Gurye Sansuyu(*Cornus officinalis*) agriculture, nearby brook and landscape should be expand-included in designation**



Study Result

3. Essential improvement for KIAHS

- **Need Concept of Area Designation**
 - Detailed criteria and concept needed for KIAHS core area and its surrounding area.
 - Boundary limit needed like Historic Cultural Environment Preservation Area
- **Need Stronger Function of Conservation and Management**
 - AHS conservation action: establishment of conservation plan, civic organization, and KIAHS status cancel for any Heritage value loss and damage
 - Requires minimal activity guideline like Historic Cultural Environment Preservation Area or Ecology·Landscape Conservation Area



Study Result

4. Suggestion for KIAHS Area Designation and its direction

- **Establishment of concept for Area Designation**
 - KIAHS status should include tangible and intangible value.

Concept in KIAHS Area

- ▶ **Core area**
 - Holds heritage significance with activity limitation for protection
- ▶ **Surrounding area**
 - Near core area and includes environment , community and resident space
 - Voluntary management by resident



Study Result

4. Suggestion for KIAHS Area Designation and its direction

- **Stronger conservation/management**
 - Minimum level activity guideline needed for protection like other system
 - Activity guideline in AHS should not interfere with farming/fishing and community life

Stronger conservation/management

- ▶ **Differentiated activity guideline needed per site**
 - Core area: ban heritage damage and any possible case must be preapproved by government
 - Surrounding area: protect core zone, resident convenient facility, eco facility and managed by community organization



Study Result

4. Suggestion for KIAHS Area Designation and its direction

Stronger conservation/management

► **Resident support for finance and administration**

- Core area: should AHS be damaged, government support restoration/maintenance and administrative support is essential for continuation of farming/fishing.
- Surrounding area: AHS community organization and experts form the operation system of conservation and management of heritage protection



Conclusion

- **AHS landscape values the relation among cultivation area, environment and landscape**
- **Activity guideline is essential for conservation and management of KIAHS like other system**
- **Establishment of concept was introduced, conservation/management function direction was suggested based on characteristics of KIAHS**
- **The study contributes for future KIAHS Area Designation and as to be the base of conservation/management criteria**

Thank you!