



The 3<sup>rd</sup> ERAHS International Conference

# Traditional Tea Agrosystem and Tea Culture in Hadong Indigenous Tea Habitats

Hadong-gun Agricultural Tech Center / Manager  
**YOON Seung Cheol**  
(E-mail : [goang@korea.kr](mailto:goang@korea.kr))



## / Table of Contents

- 1 **General Status** of  
Hadong Traditional Tea
- 2 **Characteristics and Values** of  
Hadong Traditional Tea
- 3 **Preservation, Management and Utilization**  
of Hadong Traditional Tea
- 4 Conclusion





한국기행

EBS



※ Source : A Thousand-Year Fame of Hadong Wild Tea  
/ Travels in Korea, EBS



# 1. General Status of Hadong Traditional Tea

4

**Hadong Traditional Tea Agrosystem is a traditional agricultural system upheld by the villagers of *Hwagae* to maintain their livelihood for the past 1,200 years in a harsh environment of *Mt. Jiri* Range**

**Its value was recognized in 2015 designation of  
Korea's Important Agricultural Heritage**





# 1. General Status of Hadong Traditional Tea

5

## Location

- Hwagae-myeon, Hadong-gun, Gyeongsangnam-do

## Area

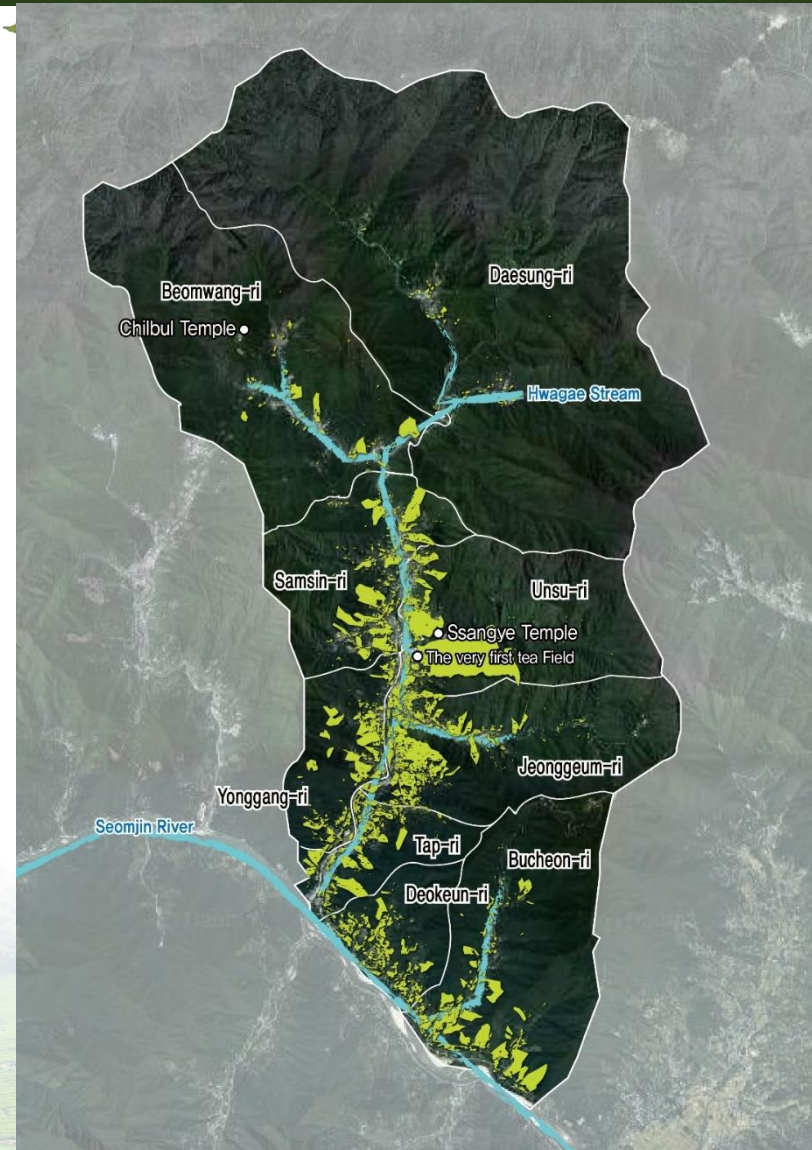
- Total : 13,436ha
- **Under Tea Cultivation : 597.8ha**

## Households

- Total : 951 Households
- **Tea-Producing : 801 Households**

## Land Use

- 93% of Hwagae-myeon's total surface is mountainous (Mt. Jiri)
- Less Favored Area in which formation of residential and farm lands is difficult



Distribution Status of Traditional Tea in Hadong



# 2.

## Characteristics and Values of Hadong Traditional Tea

6

### Value of Hadong Traditional Tea as an Agricultural Heritage



History



Technology



Culture



Scenery/Ecology



# ① History

## A 1000-Year History Embedded in Hadong Traditional Tea

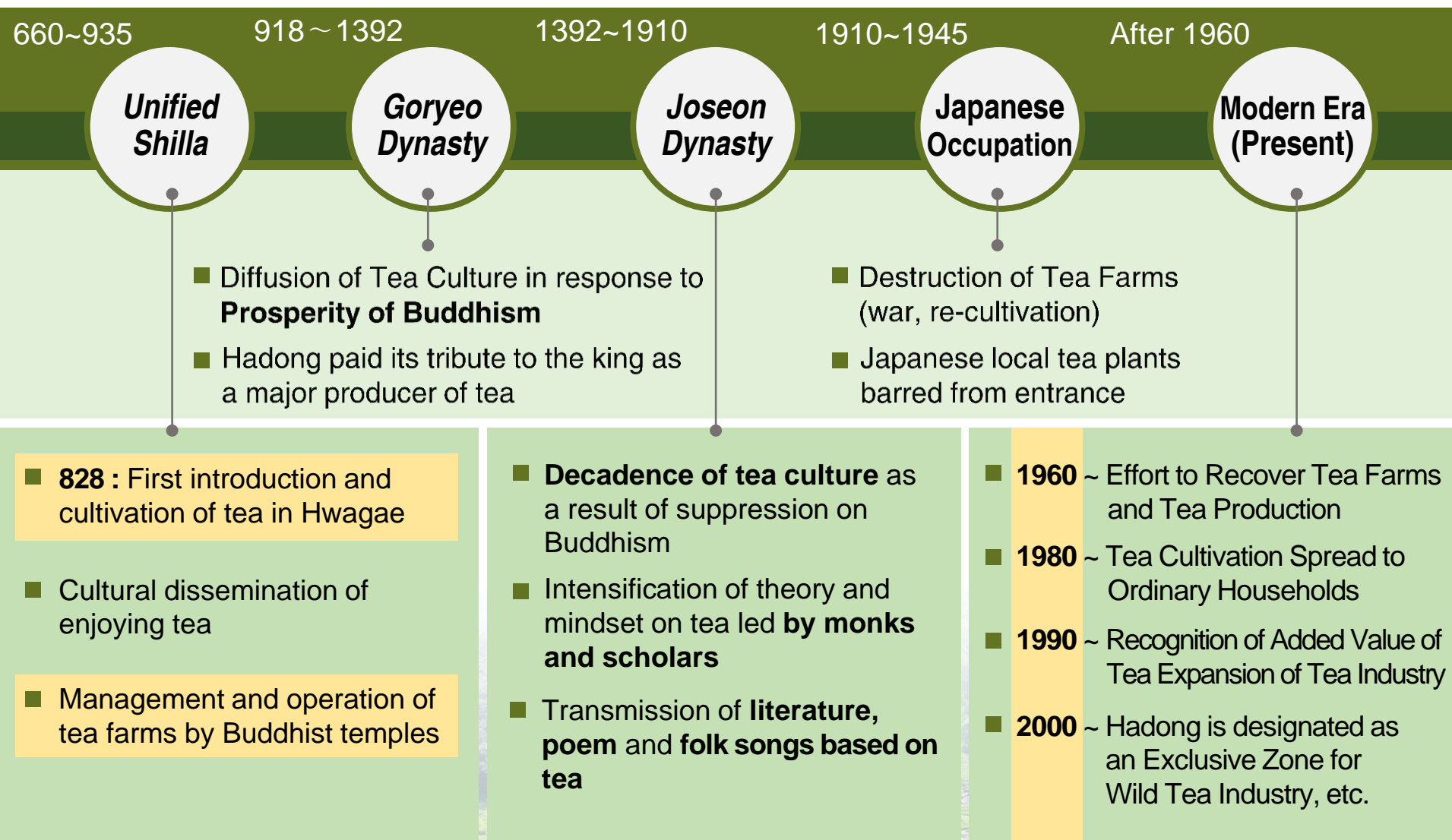






# The History of Hadong Traditional Tea

8



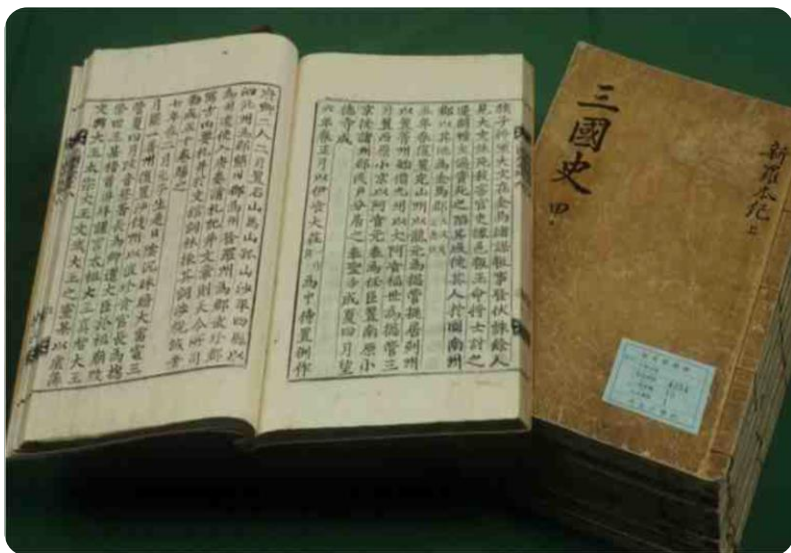




# Hwagae-myeon as the 'First Tea Farm of Korea'

9

- According to an account in 「*Samguksagi*」 **King Heungdeok of Shilla in his third year of reign ordered the tea seeds that were brought by *KIM Dae Ryeom*, who was sent as an envoy to Tang, to be planted in Hwagae region of Mt. Jiri**
- According to a survey conducted by Korea Record Institute and the Korean Tea Society on current status of wild tea plants nationwide In July of 2008, **Hwagae-myeon was officially recognized as the First Tea Farm of the Korean Peninsula**



**Samguksagi** (Historical Record of the Three Kingdoms)



**The First Tea Farm in Hwagae-myeon**





# The Oldest Tea Plant in Korea

10

- The tea plant, which has been growing naturally in *Dosim Tea Garden* in *Jeonggeum-ri, Hwagae-myeon*, is called the **‘Oldest Tea Plant’ found in Korea**, and it has been designated as a Gyeongsangnam-do Provincial Monument 264.
- The Oldest Tea Plant is **the living evidence of the tea history not only in Hadong Region but also in Korea**, as a tea plant’s age symbolizes the long history of tea and its culture.



The Oldest Tea Plant in *Dosim Tea Garden*

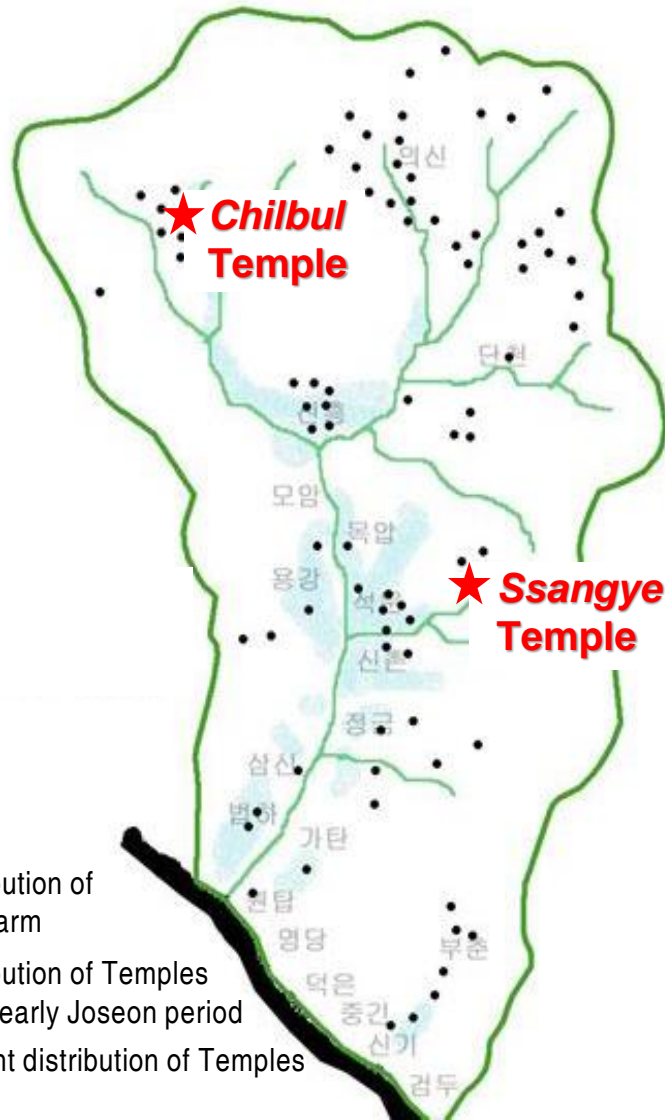


Bidding Event on the Oldest Tea Plant's product, "Thousand-year Tea"



# The Tea Culture and Buddhism in Hwagae Region

11



- Hwagae-myeon was historically a village with a great number of Buddhist temples, which experienced such **a great prosperity of Buddhist culture that it was called the 'Buddhism of Jiri Mountain'**
- Before the modern era, **the tea farms were managed and operated by the temples, and propagated by the monks**



**Ssangye Temple and the First Tea Farm**





# The Tea Culture and Buddhism in Hwagae Region

12

- Monks and Residents of Hwagae cultivate the tea farm together, and **share and transmit the knowledge system of tea production exclusively held by the Hwagae region**
- The regional structure, in which **the Buddhist culture** was able to prosper, is **a significant factor in continuation of Hwagae tea farm and the tradition of producing hand-made tea**



Buddhist Ceremony in *Ajabang* of *Chilmul* Temple



Master *HONG* So Sul and the monks



## ② Technology

# Human Effort and Proprieties

## Hadong Traditional Hand-Made Tea





# As Given by Nature : ‘Natural Agricultural Methods’

14

- **Hwagae is suitable for cultivating tea plants with geographic properties** that result in a perfect natural environment for growth of tea plant
- **Natural agricultural techniques**, such as handpicking and grass fertilization, which **minimize artificial management of tea farms** and intervention.



Handpicking



Grass Fertilization

“Hadong Tea nourished by  
Jiri Mountains and Hwagae Stream”





# Traditional Tea Method in Hadong : ‘Handmade Roasted Tea’

15

- **The tea leaves**, hand picked one-by-one, are **roasted in a *Sot* (Korean cauldron)** to boost its rich flavor and scent
- Hwagae-myeon’s tea production method of hand-roast is **the same as the one described in *Dongdasong*** (Praise of Eastern Tea) written by the Venerable *Cho-ui*



① Picking and  
Choosing Leaves



② Roasting



③ Rubbing



④ Dehydrating



⑤ Final Roasting

# ③ Culture

## From generation to generation

### Daily Customs of Hadong Tea







# Hadong's Traditional Folk Tea : 'Jaeksul Cha'

17

- Historically, superior-quality tea from Hadong was paid as a tribute. Commoners produced '**Jaeksul Cha,**' a fermented tea using left over tea leaves or those harvested in July and August with rough texture
- Both as **a beverage and household medicine** from old times, **it has been registered as the Ark of Taste** by Slow Food Foundation for Biodiversity in 2016, in appreciation of its historic value and excellence in flavor



A local resident producing *Jaeksul Cha*



Hadong Jaeksul Cha – Certificate of the Ark of Taste



# Local Cooperative Community : ‘Sharing Group of Labor’

18

- Traditional tea agrosystem of Hadong employs **a handpicking method for tea harvest**
- It seeks to maintain the traditional method of tea harvest **by forming a local cooperative community**



Tea Harvest in the 1980's



Tea Harvest in 2016





# People Keep Together ‘the Culture of Tea Ritual’

19

- Every year, the First Tea Farm becomes a site for two Tea Rituals: **Pungdaje** in April, wishing for an abundant harvest; **Hundarye** in May, offering to Buddha the first tea harvested before *Gokoo* (one of the 24 division points of the year; usually on April 20th or 21st)
- **In Hwagae Elementary School, tea classes on values of tea and etiquettes** have been held for more than 20 years in **an effort to sustain Hadong’s tea culture**



*Hundarye*

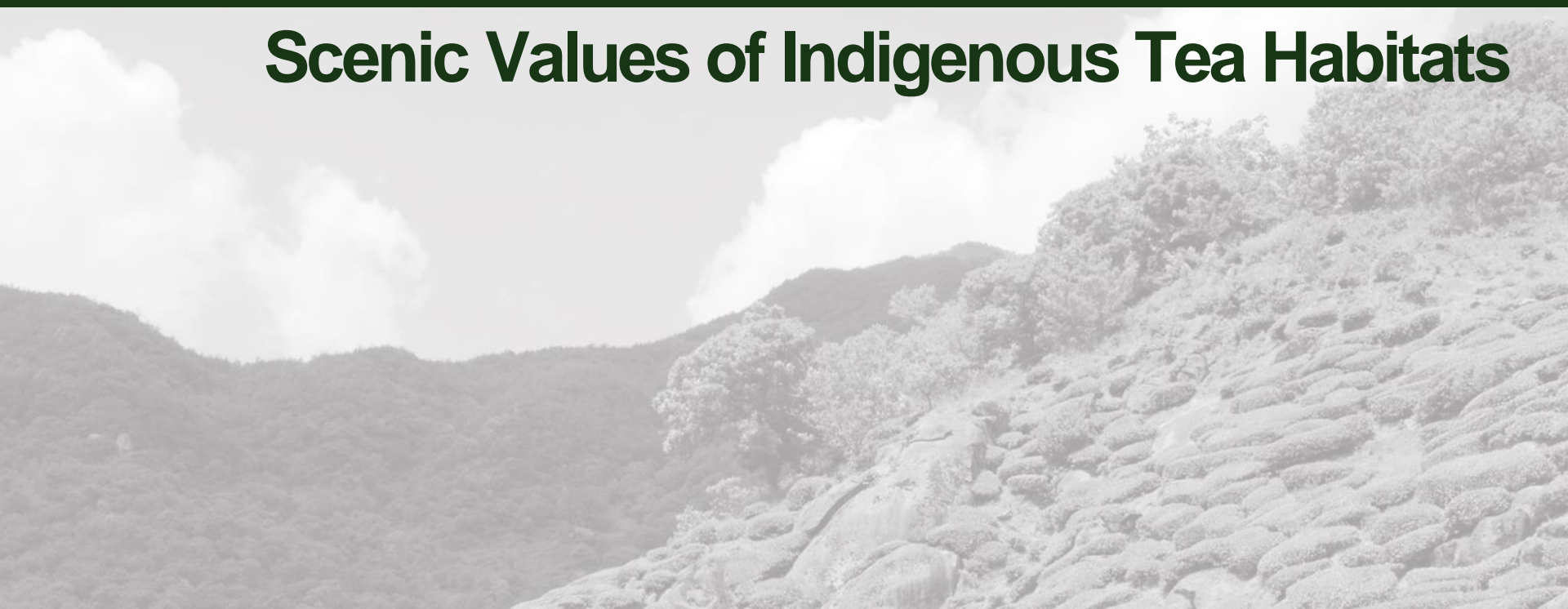


Tea Class held in Hwagae Elementary School

# ④ Scenery / Ecology

## Embracing Jiri Mountains and Seomjin River

Scenic Values of Indigenous Tea Habitats



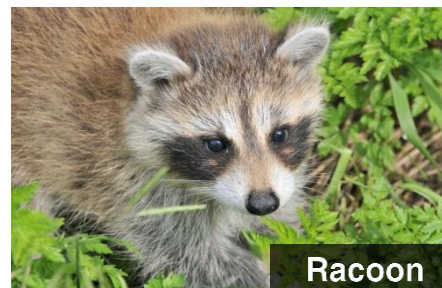




# Indigenous Tea Habitats and Biodiversity

21

- The tea habitats in Hwagae-myeon can be utilized as **a habitat for fauna and flora within the Jiri Mountain range**, with fresh air running down from Jiri Mountain and moisture from Hwagae Stream(Seomjin River)
- **Natural agricultural techniques** used to maintain and manage the tea habitats avoid damage to the ecosystem and **contribute to biodiversity**





# Hadong's Natural and Cultural Scenery

22

- Tea habitats of Hwagae-myeon are mainly distributed along the Seomjin river bank of Jiri Mountain Range, located in between rocks to bring harmony with the mountains and **displaying the unrefined beauty of the wild nature**
- Moist fog along the Seomjin River, scent of soil across the tea farms, sound of women picking tea leaves and traditional harvest creates **a cultural scenery of Hadong's traditional tea farming**



Natural Scenery



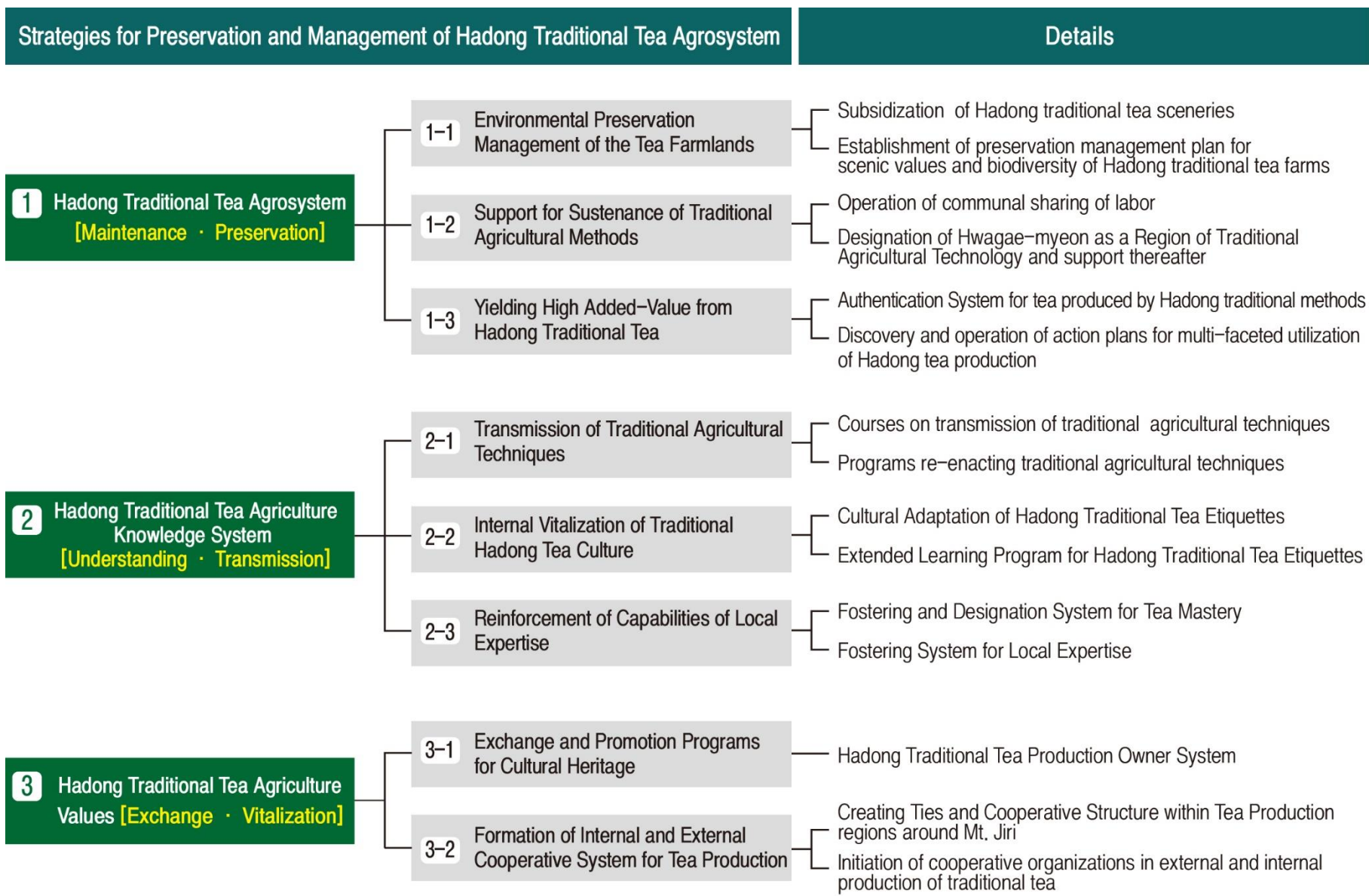
Hadong Indigenous Tea Habitats  
Distinctive Scenery



Cultural Scenery



# Preservation Management and Utilization of Hadong Traditional Tea Agrosystem



## 3.

# Preservation Management and Utilization of Hadong Traditional Tea Agrosystem

24

## ① Traditional Tea Knowledge System and Research on Related Cultural Aspects of Hadong



Interview with Residents on Hadong Tea Production in Dosim Tea Garden



# 3.

## Preservation Management and Utilization of Hadong Traditional Tea Agrosystem

25

### ① Traditional Tea Knowledge System and Research on Related Cultural Aspects of Hadong



Interview with Residents on Hadong Tea Production in *Cheongsok-gol*



# 3.

## Preservation Management and Utilization of Hadong Traditional Tea Agrosystem

26

### ① Traditional Tea Knowledge System and Research on Related Cultural Aspects of Hadong



Interveiw with a Monk (Chief Monk of Ssanggye Temple)



## 3.

# Preservation Management and Utilization of Hadong Traditional Tea Agrosystem

27

## ① Initiation and Practice of Cooperative Research Group on Hadong Traditional Tea through Local Participation



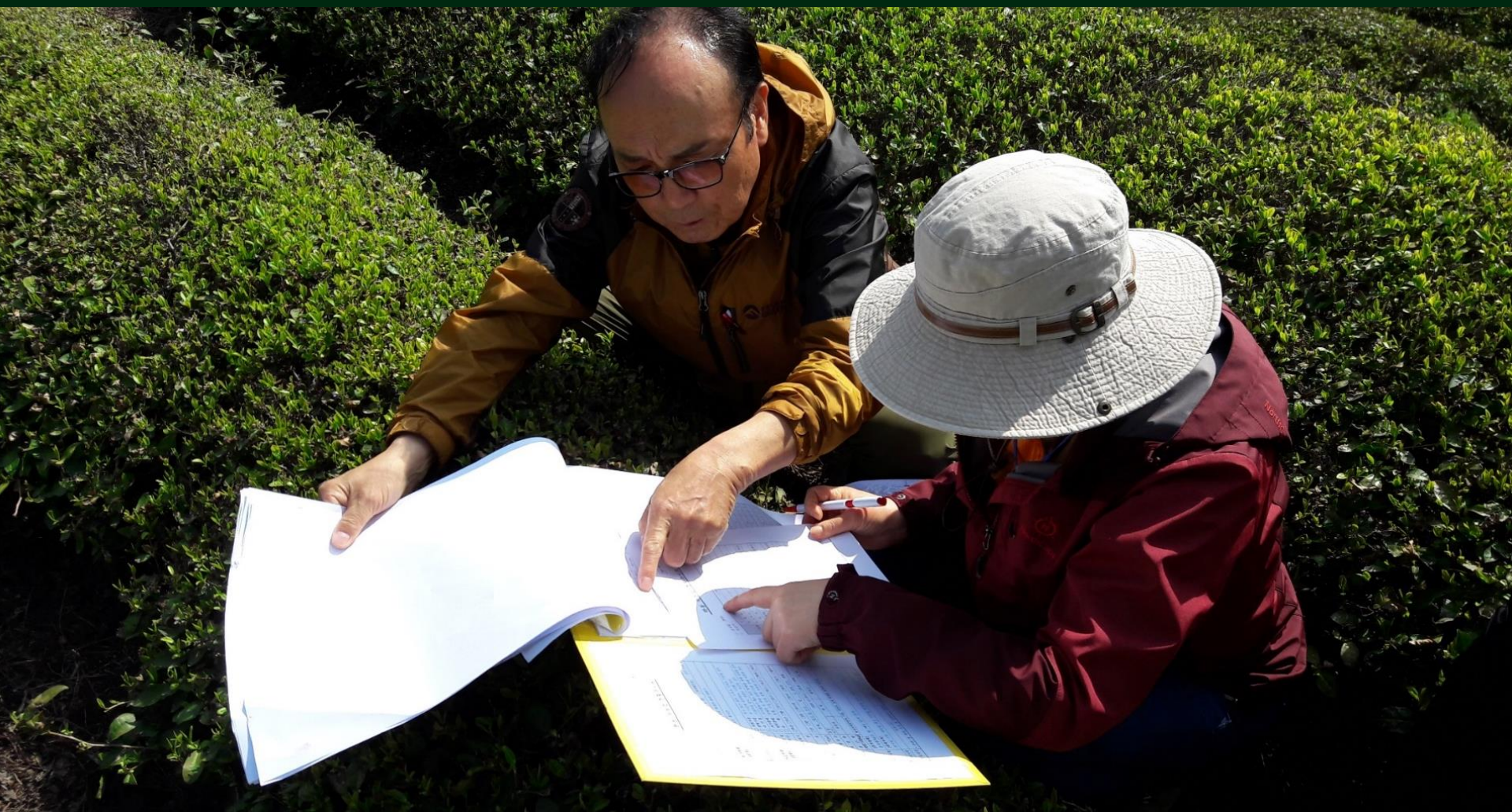


# 3.

## Preservation Management and Utilization of Hadong Traditional Tea Agrosystem

28

### ① Initiation and Practice of Cooperative Research Group on Hadong Traditional Tea through Local Participation





# 3.

## Preservation Management and Utilization of Hadong Traditional Tea Agrosystem

29

### ① Reinforcement of Local Capability Operation of Academy for Fostering Commentators





# Preservation Management and Utilization of Hadong Traditional Tea Agrosystem

## ① Partaking in World O-Cha Festival in Shizuokashi, Japan: Promotion of Hadong Traditional Tea Production as an Agricultural Heritage

**World O-CHA Festival 2016**  
**SHIZUOKA JAPAN**

**「O-CHAを愉しむ」**

**「O-CHAを五感で感じる」**

**秋の祭典** 2016年10月27日(木)～30日(日)  
[春の祭典] 2016年5月13日(金)～15日(日)

■会場  
[春の祭典] 富士山静岡空港、静岡市お茶の郷 ほか  
[秋の祭典] 静岡駅南口バスターミナル、浜松 ほか

■主旨  
茶の歴史と茶文化の継承と発展

第6回世界お茶まつり実行委員会事務局  
静岡県農林産物部茶業振興課内  
〒422-8067 静岡県静岡市駿河区南町14-1 水の森ビル3F  
TEL 054-202-1488 FAX 054-202-1480  
E-Mail wof@pref.shizuoka.lg.jp

見る、聞く、触れる、味わう。O-CHAを五感で感じよう。

**共通プログラム Spring/Fall Program**  
**世界大茶会**  
International Tea Time

- 世界各地の喫茶習慣や楽しみ方を知る茶会  
Tea time showcasing customs from around the world
- 富士山の魅力を感じる茶会  
Mt. Fuji tea time

**魅力のコラボレーション**  
Activities Combining Tea with Other Attractions

- お茶を愉しむ空間の提案  
Creating a space for tea appreciation
- お茶と音楽のコラボレーション  
Tea-music fusion event

**お茶を知るセミナー**  
Tea Seminars

- お茶の楽しみ方講座・効能セミナー等の開催  
Courses on tea-tasting, special properties of tea, and other subjects

**春**  
Spring

**2016. 5.13～15 春の祭典プログラム**  
Spring Festival Program

- 新茶時期の産地を愉しむツアー  
Tea plantation tour featuring first tea of the season
- 新茶の試飲販売  
Sampling and sales of first tea of the season
- 世界のお茶を愉しむ  
International tea tasting
- 高校生によるお茶の魅力発信  
Presentation by high schoolers on the wonders of tea
- お茶畑 サイクルラリー  
Tea field bicycle ride

**秋**  
Fall

**2016.10.27～30 秋の祭典プログラム**  
Fall Festival Program

- 茶産品の総合見本市  
Exhibition and sales of tea and tea products
- 歴史を知りお茶の魅力を感じるツアー  
Tea history tour
- 世界緑茶コンテスト  
World Green Tea Contest
- 世界緑茶会議  
World Green Tea Conference
- 世界茶文化体験  
Tea of the World Workshop

**「O-CHAを愉しむ」**

Webサイトにて、最新の情報をご覧ください。

5 言語対応

**世界茶節2016**  
享受茶趣  
お茶の楽しみ方

**世界茶節2016**  
お茶の楽しみ方

See and enjoy  
Art, landscape, tea set... "What's what"  
Because tea has time, space, culture and atmosphere. Please enjoy tea time to feel with your eyes.

Enjoy aroma  
The aroma of tea is of variety and the way to enjoy are also many. Would you like to experience the tea space wrapped in tea, tea essence and aroma?

第6回世界お茶まつり実行委員会事務局

静岡県農林産物部茶業振興課内  
〒422-8067 静岡県静岡市駿河区南町14-1 水の森ビル3F  
TEL 054-202-1488 FAX 054-202-1480  
E-Mail wof@pref.shizuoka.lg.jp

The 6th World O-CHA (Tea) Festival Executive Committee

O-CHA (Tea) Promotion Office, Shizuoka Prefectural Government  
3F, Mizumori Bldg. 14-1 Minami-cho Suruga-ku, Shizuoka City  
422-8067 Japan TEL +81 (0) 54-202-1488 FAX +81 (0) 54-202-1480  
E-Mail wof@pref.shizuoka.lg.jp



# 4. Conclusion

31

## Traditional Tea Agrosystem of Hadong

Is the human effort and propriety through Picking, Roasting and Serving tea

It is the human Is the environment for tea production created by the hands of  
the Hadong residents for the past 1,200 years - a product of wisdom

**In response, Hadong-gun plans to launch a systematic preservation,  
management and utilization plan for  
continuous transmission of traditional tea agrosystem**



# Thank You for Listening



국가중요농업유산  
Korea Important Agricultural Heritage System

The 3<sup>rd</sup> ERAHS International Conference

**Traditional Tea Agrosystem and Tea Culture  
in Hadong Indigenous Tea Habitats**

