

# Takachihogo-Shiibayama

## Mountainous Agriculture and Forestry System



# Today's Presentation

The valuable points of Takachihogo-Shiibayama site

- I. Location
- II. Mountainous Agriculture and Forestry System
- III. Strong Local Communities
- IV. For the Future (Action Plan)

# I. Location of Takachihogo-Shiibayama Site

The Site Data	
Total Area	1,411km <sup>2</sup>
Forest area	92%
Farmland area	3%
Population	Approx. 27,000





# Steep Mountainous Area





# A Cradle of Japanese Mythology



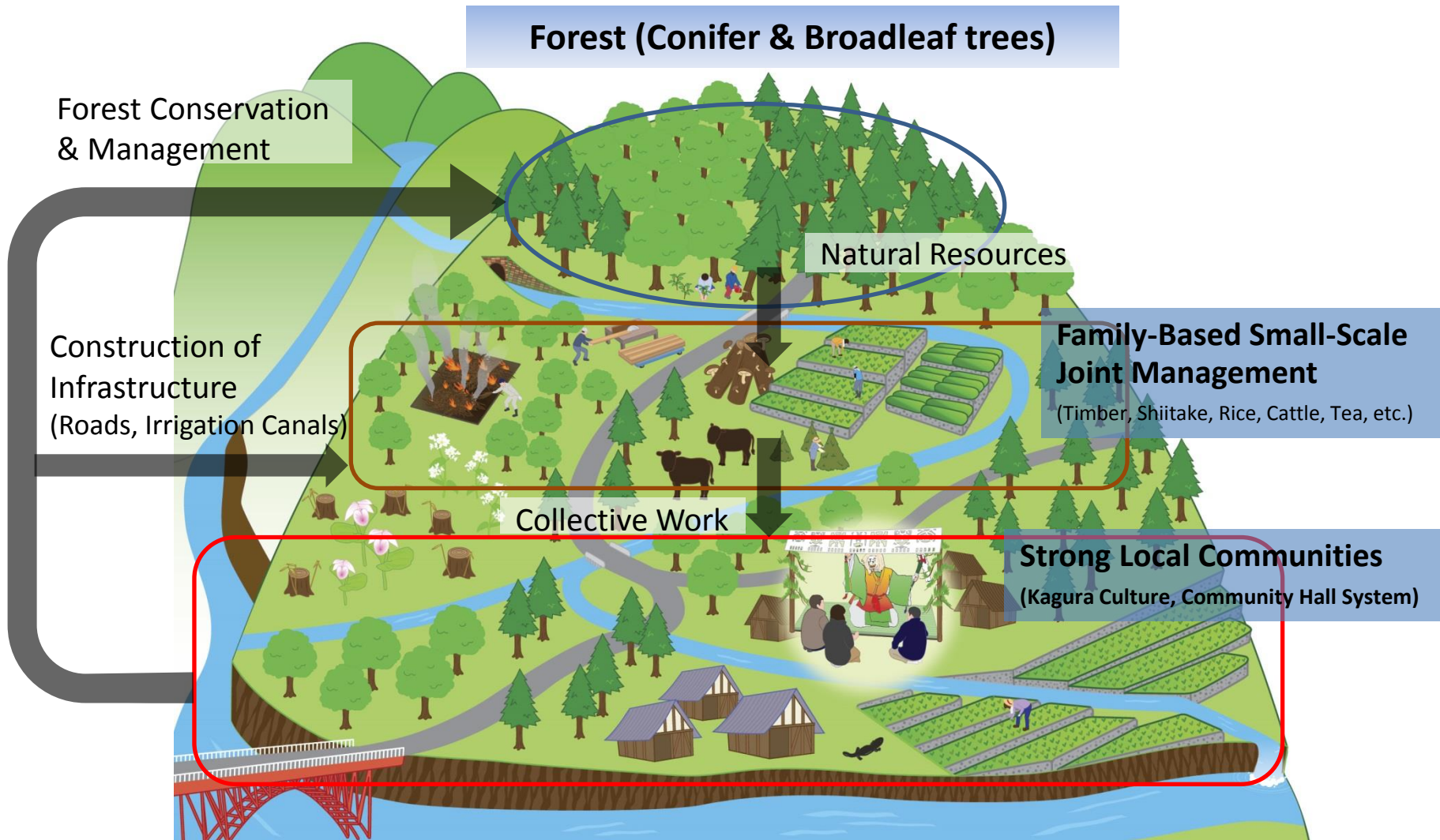


## Farmers in the Site

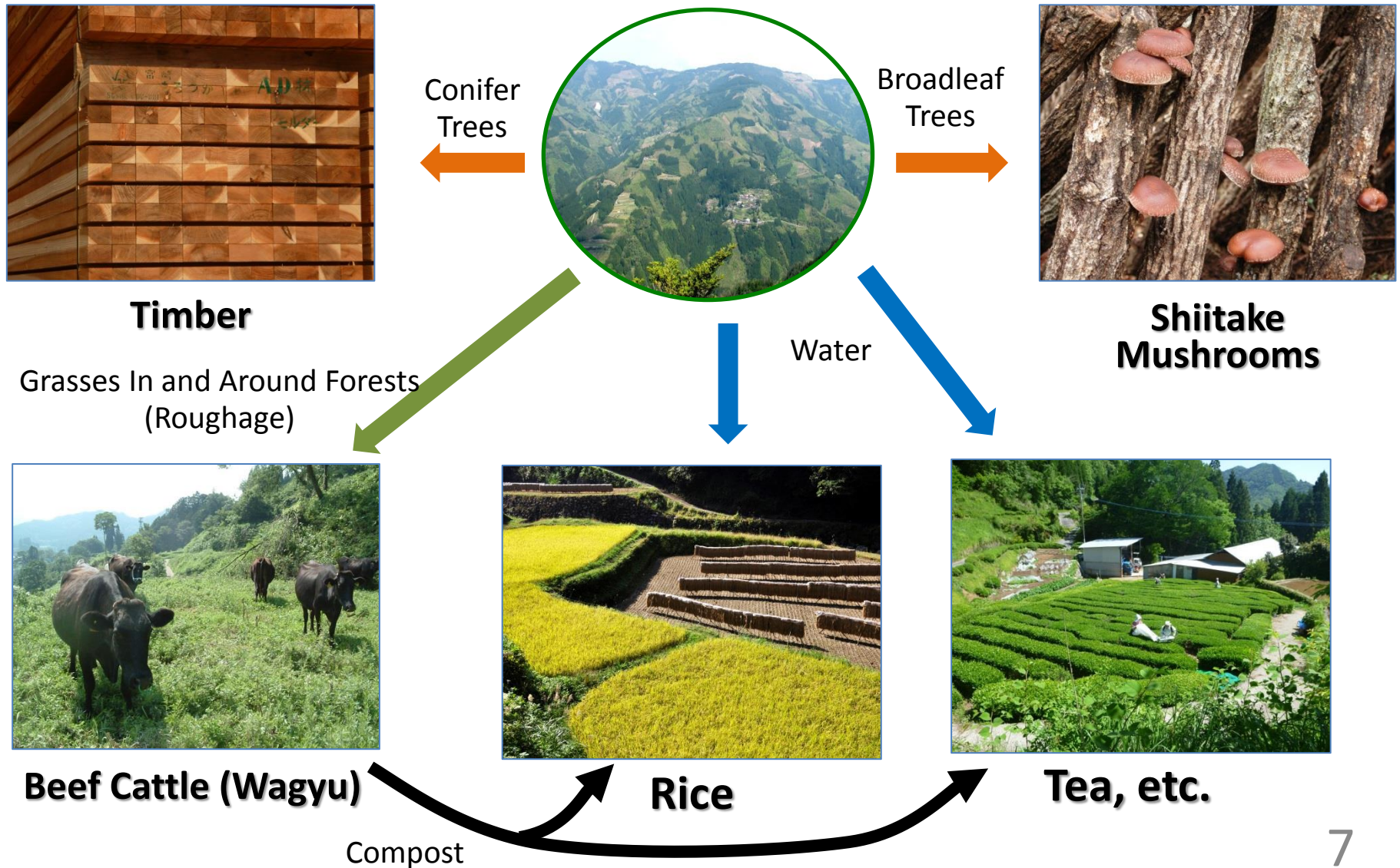




## II. Mountainous Agriculture and Forestry System



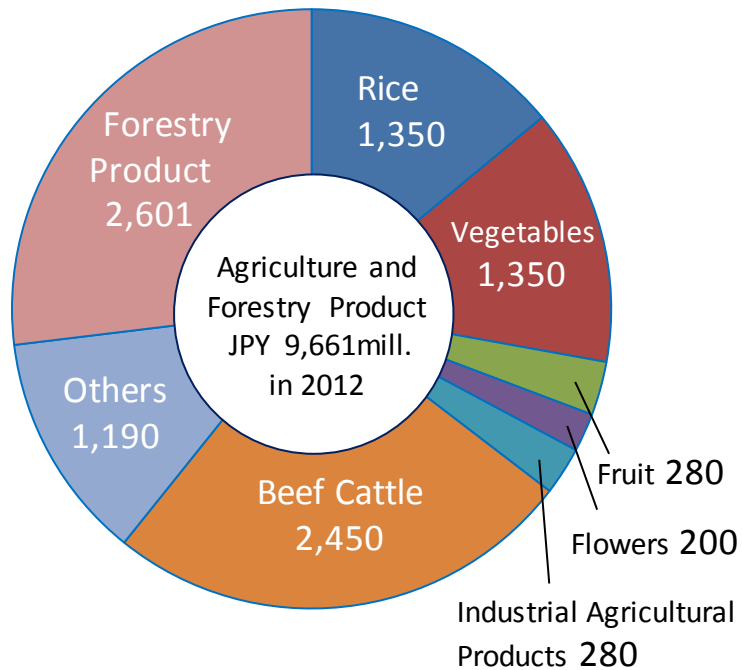
# Family-Scale Joint Management to Use Natural Resources Effectively



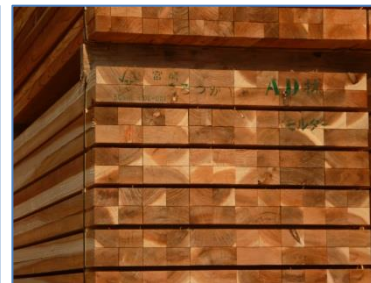
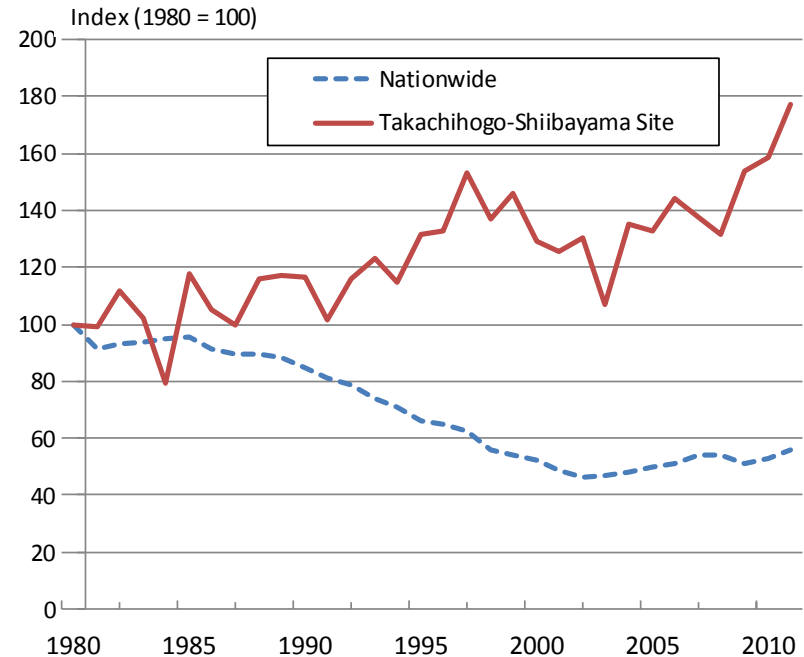


# Excellent Production Activities

## Various Agriculture Products



## Increasing Timber Production



# Unique Landscape: Mosaic Forest (forests of conifer trees and broadleaf trees )



Conifer Forest  
(dark green color)



Broadleaf Forest  
(light green color) 9



# Sustainable Agriculture

## FSC (Forest Stewardship Council ) Certification



The entire Mosaic Forest  
(17,000 ha)



Shiitake mushrooms  
produced by woods of the Mosaic Forest

The only place in the world!

# Biodiversity

## Secondary nature nurtured by the agriculture system



Japanese  
Cypripedium



Maculinea teleius  
daisensis



Adonis

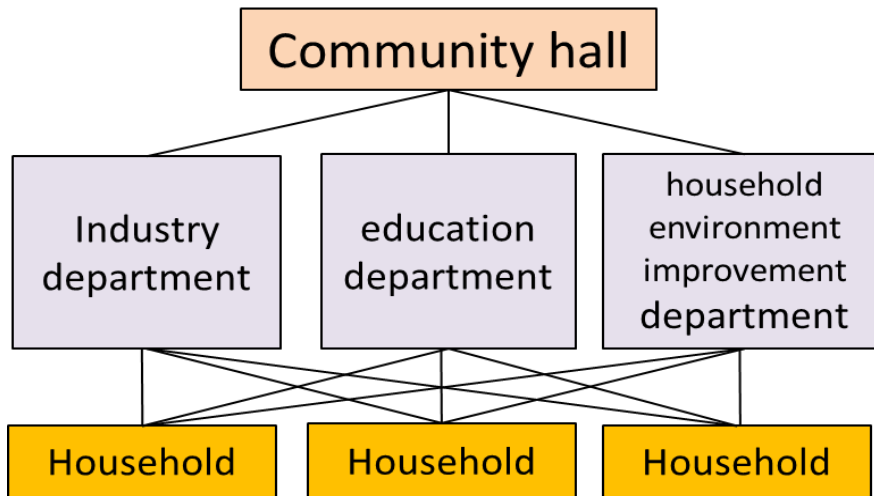


Star lilies



# III. Strong Local Communities

## Community Hall System (organization of one local community)



- All residents belong to it
- It is independent of government
- It has departments to improve agriculture, living standards, education, etc.
- When it comes to decision-making by community halls, all residents have an equal right to speak, and decisions are made following thorough discussions



Residents of a community hall having a discussion

# Activities by Strong Local Communities

## A. Road development with cooperation of community residents



Road network of Morotsuka Village  
in the eastern part of the Site.

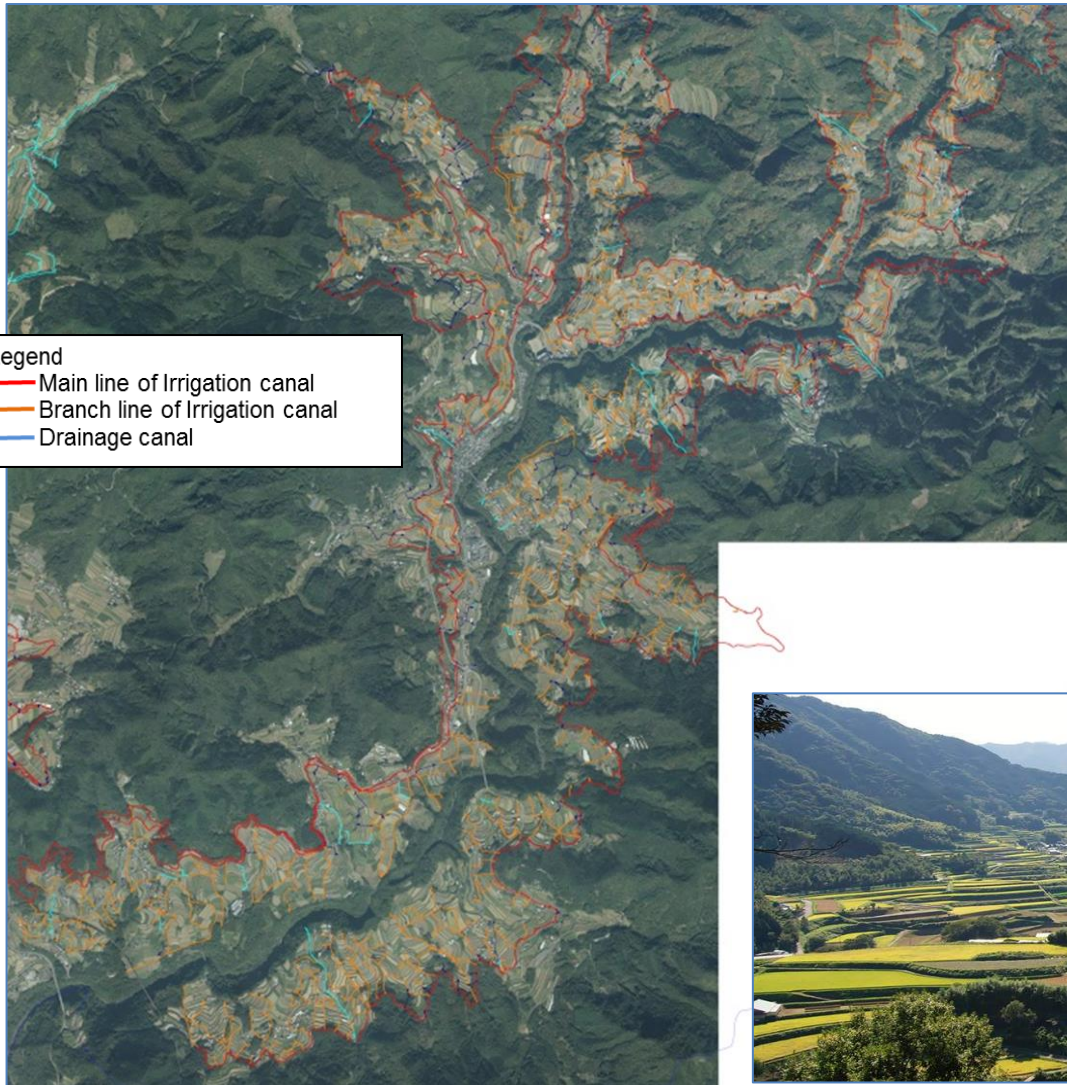
- Community residents supplied land and labor to actively develop a road network In the case of Morotsuka Village in the eastern part of the Site
- Morotsuka Village has a **road density of 62 m/ha—the highest in Japan.**



Community residents constructing a  
local road by themselves



## B. Irrigation Canal Networks (total of **over 500km**)



Handmade canal tunnel



Canal on a steep mountain side



A sample of Irrigation Canal Networks in the Site (Takachiho Town)



# Culture: Kagura Dance (Ritual Shinto Dance)



- Expresses gratitude to the gods for their blessings and prays for a bountiful harvest
- Almost every community holds them and every person in the community participates
- Symbolizes the bonds of local communities in the Site





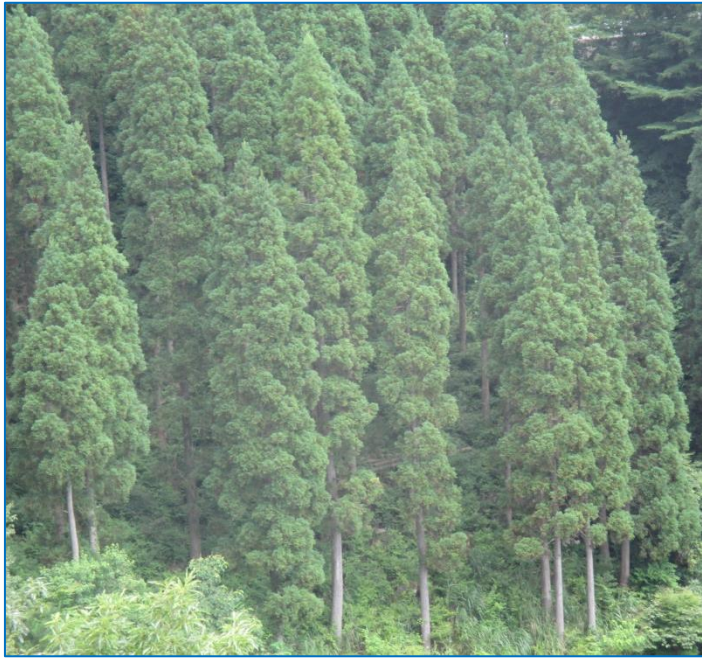
## IV. For the Future (Action Plan)

Our GIAHS promotion association will

- A) Conserve the agriculture system and forest
- B) Conserve traditional culture
- C) Provide experiences of agriculture and the forest
- D) Develop human resources
- E) Contribute to mountainous areas around the world as a GIAHS site

For realizing Forestopia (Forest-Utopia)

## A. Conservation of the Agriculture System and Forest



Members of the incorporated foundation “Wood Pia Morotsuka”



## B. Conservation of Traditional Culture



Local elementary school children practice traditional shifting cultivation with elders.



## C. Providing Experiences of Agriculture and the Forest



Farmhouse accommodation



Forest therapy



## D. Development of Human Resources



Forestopia Learning Forest  
Miyazaki Prefectural Gokase  
Secondary School



# Contribution to Mountainous Areas Around the World as a GIAHS Site



GIAHS

Globally Important Agricultural Heritage Systems

