

KOREA IMPORTANT FISHERIES HERITAGE SYSTEM(KIFHS)

Policy Direction for

**KOREA IMPORTANT FISHERIES
HERITAGE SYSTEM(KIFHS)**

June 14, 2016



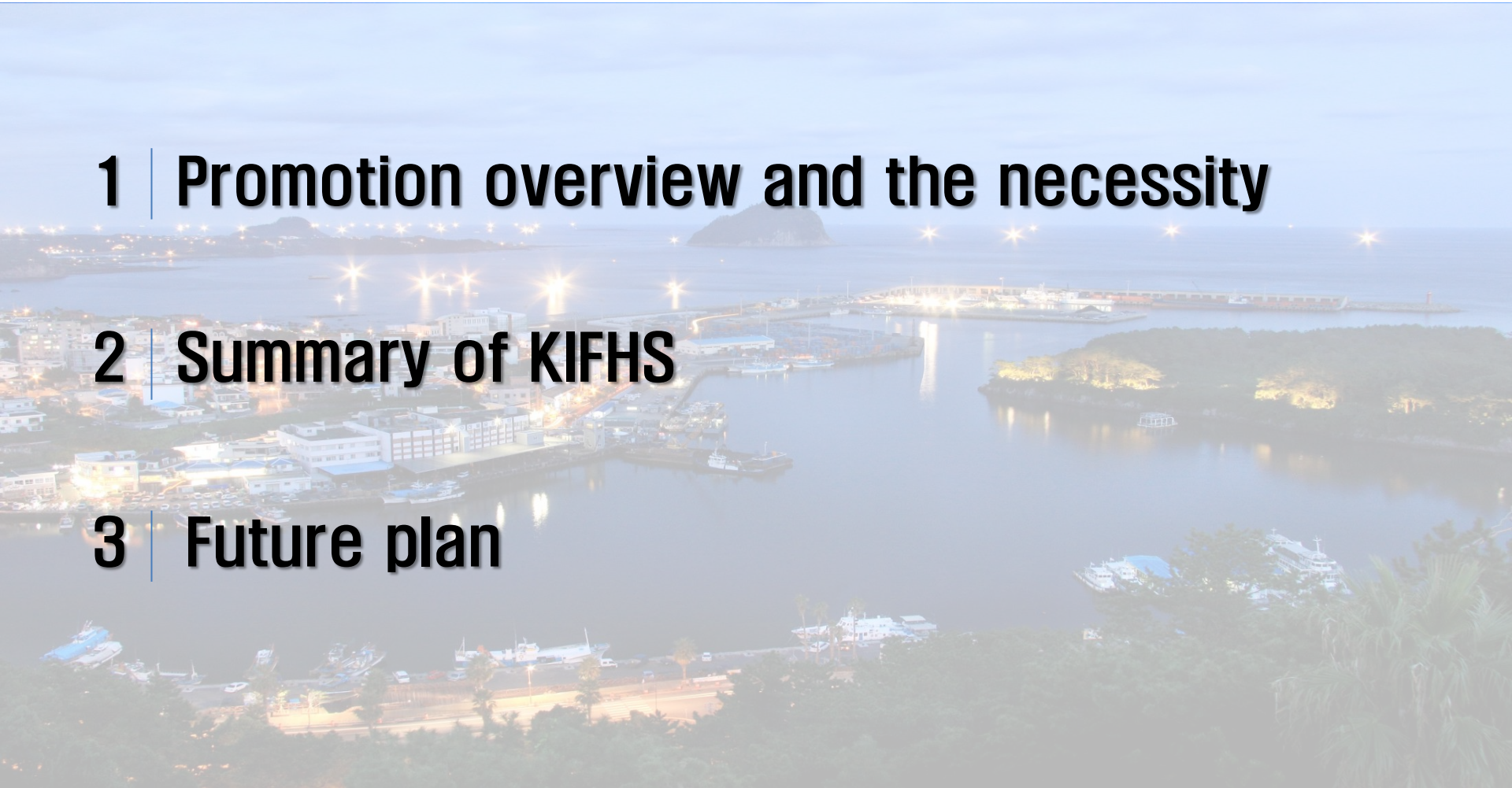
해양수산부

CONTENTES

1 | Promotion overview and the necessity

2 | Summary of KIFHS

3 | Future plan



1. Promotion overview and the necessity

Outline of Propel and necessity

I . Promotion overview and the necessity

Background and necessity

Issues of urbanism, sprawling development, aging fishery community post industrialization

- Damage, negligence → value lost for tangible/intangible heritage



Global system for sound utilization of spatial fishery/agricultural system

- 2012 : 'Korea Important Agricultural Heritage System(MAFF)
- 2013 : Separation of structure → MAFF/MAF
- 2015 : Launch of 'Korea Important Fishery Heritage System'

I . Promotion overview and the necessity

Objectives

- ▷ Inherit traditional fishery heritage thru conservation/management
- ▷ Branding/tourism thru plural value and utilization of fishery area.

“Contribute to economic stimulation of fishery area”



2. Summary of KIFHS

II. Promotion overview and the necessity

KIFHS concept

- Traditional fishery system with over 60 year evolutionary progress and the outcome resource of tangible/intangible, including fishery landscape and culture.

Applicable Act

- Special Act Article 30-3(Conservation/utilization of KIFHS) Improvement of fishery/farmers' life quality and rural area development – proclamation(Feb 3 2015)

Designation objectives

- Complex heritage of intangible SYSTEM and tangible LANDSCAPE

SYSTEM(Software)	LANDSCAPE/FACILITY(Hardware)
Biodiversity/ & function of ecosystem Fishing knowledge & tech system Fishing custom • cultural system	Fishery facility (mud, salt pond etc) Fishery production • process equipment Landscape of community • ocean • river etc

II. Summary of KIFHS

Criteria

- Refined from **FAO GIAHS** designation criteria

Type	Term	Detailed guideline
Features of KIFHS	Food security	<ul style="list-style-type: none"> ○ Degree of food production and local food security ○ Utilization level of fishing product as food resource
	Biodiversity	<ul style="list-style-type: none"> ○ Conservation/enhancement of biodiversity and ecological function
	Knowledge system	<ul style="list-style-type: none"> ○ Knowledge system and technology of heritage ○ Management tech to protect and preserve heritage
	Traditional culture	<ul style="list-style-type: none"> ○ Heritage related culture and acknowledgement degree ○ Succession of utilization tech for heritage
	Landscape	<ul style="list-style-type: none"> ○ Outstanding scenery ○ Harmony with nearby villages and environment
Historicity		<ul style="list-style-type: none"> ○ Minimum of 60 year historicity ○ Acceptable significance in its future status
Regionality	Policy of local government	<ul style="list-style-type: none"> ○ Local level conservation management plan establishment and financial support ○ Local ordinance for heritage maintenance
	Acknowledgement	<ul style="list-style-type: none"> ○ Local people's awareness and pride for heritage
	Sustainability	<ul style="list-style-type: none"> ○ Utilization possibility for future ○ Utilization possibility to revitalize the region addition to fishing
	Value enhancement	<ul style="list-style-type: none"> ○ Action plan for conservation management and its validity

II. Promotion overview and the necessity

Designation procedure

- Per 『KIFHS Designation and Management Criteria 』 notification



- Heritage description
- Cadastral information
- Consent of community association

- Phase 1: Document Review
- Phase 2: Site visit
- Phase 3: Decision delivery

1. Document to be produced by local government or community association
2. Site visit is condition to the result of Phase 1
3. Commission of Inquiry(3 to 5 persons) will verify the content of document and its suitability
→ Site review and analysis (Professional institute can be included if needed)
4. Post comprehensive review(document/site visit) → Final decision and designation

II. Promotion overview and the necessity



Advisory Committee and its task

Base: 『KIFHS Designation and Management』 notice

- Within 20 member appointment including experts and 4 officio member
- Officio member: experts from government and related organization
- Appointment: consist of 6 fields(food, culture, landscape, ecology, marine/fishery, fishery area development)
- Term of appointment member: 2 years

● Task: advice for KIFHS designation procedure

Type	Task
Chairperson	○ Represent overall structure of Advisory Board
Vice Chairman	○ Assist Chairperson and replace Chairperson's duty in his vacancy
Advisory Board	○ Designation/amendment of KIFHS
	○ KIFHS application procedure
	○ Establishment and amendment of KIFHS designation criteria, procedure and title
	○ Upon advise request by Minister of MMA for further conservation management and utilization of KIFHS

II. Promotion overview and the necessity

Designated site in 2015

Jeju Haenyeo Fishery System

- ✓ **Feature:** Traditional ecofriendly fishery system of bare hand diving catch for abalone, conch etc.
- Culture:** Unique culture of bulteok(fire place) and Haeshindang(shrine)
- Biodiversity:** Annual TAC(control amt of catch) and prohibited period of catch
- ✓ **Local government:**
 - ✓ ○ Haenyeo culture conservation:- Haenyeo Museum, Haenyeo Festival, established Ordinance
 - ✓ ○ Haenyeo protection • welfare – various medical support and production facility set up



II. Promotion overview and the necessity

Designated site in 2015

Boseong Bbeolbae Fishery System

- ✓ **Feature:** Traditional fishery system, gathering cockles on a Bbeolbae(wooden boat for the finest mud area)
Culture: From lunar New Year till first full moon(about 15 days), people fix Bbeolbae boat, place in home for prayer of rich catches
- ✓ **Biodiversity:** Beolgyo Mud is recognized as one of 5 global mud area
- ✓ ○ Sustainable production – systemized cockle cultivation and information exchange to secure seedlings
- Residents:**
 - Fishing Village Cooperatives level administrative system and by laws have been established and inherit the
- ✓ bbeolbae boat building skill



II. Promotion overview and the necessity

Designated site in 2015

Namhae Jukbangnyeom Fishery System

- ✓ **Feature:** the only trap fishing system in Korea includes v-shape bamboo net placed in the fork of the sea and catch fish around tidal gap

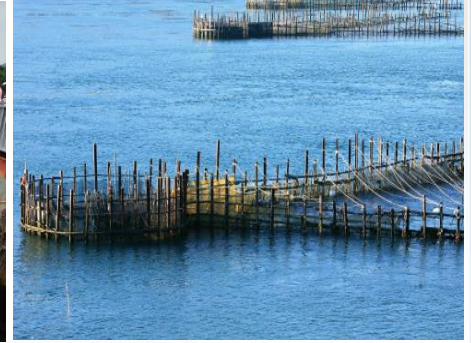
Culture: Anchovy Festival, Hwagyebaeseondae, Babmudeom

- ✓ **Biodiversity:**

- ✓
 - Various marine organism live in various shape and environment of beach, rock and bedrock area 모래 해변,
 - Fish species protected following the laws of nature(juvenile fish is released back into ocean)

Local government

- Establishment of Ordinance for Jukbangnyeom management



II. Promotion overview and the necessity

KIFHS B.I

- Visual logo system represents significance and meaning of KIFHS
- Symbol represents ocean, man and prayer of rich catch and safety



[Logo]



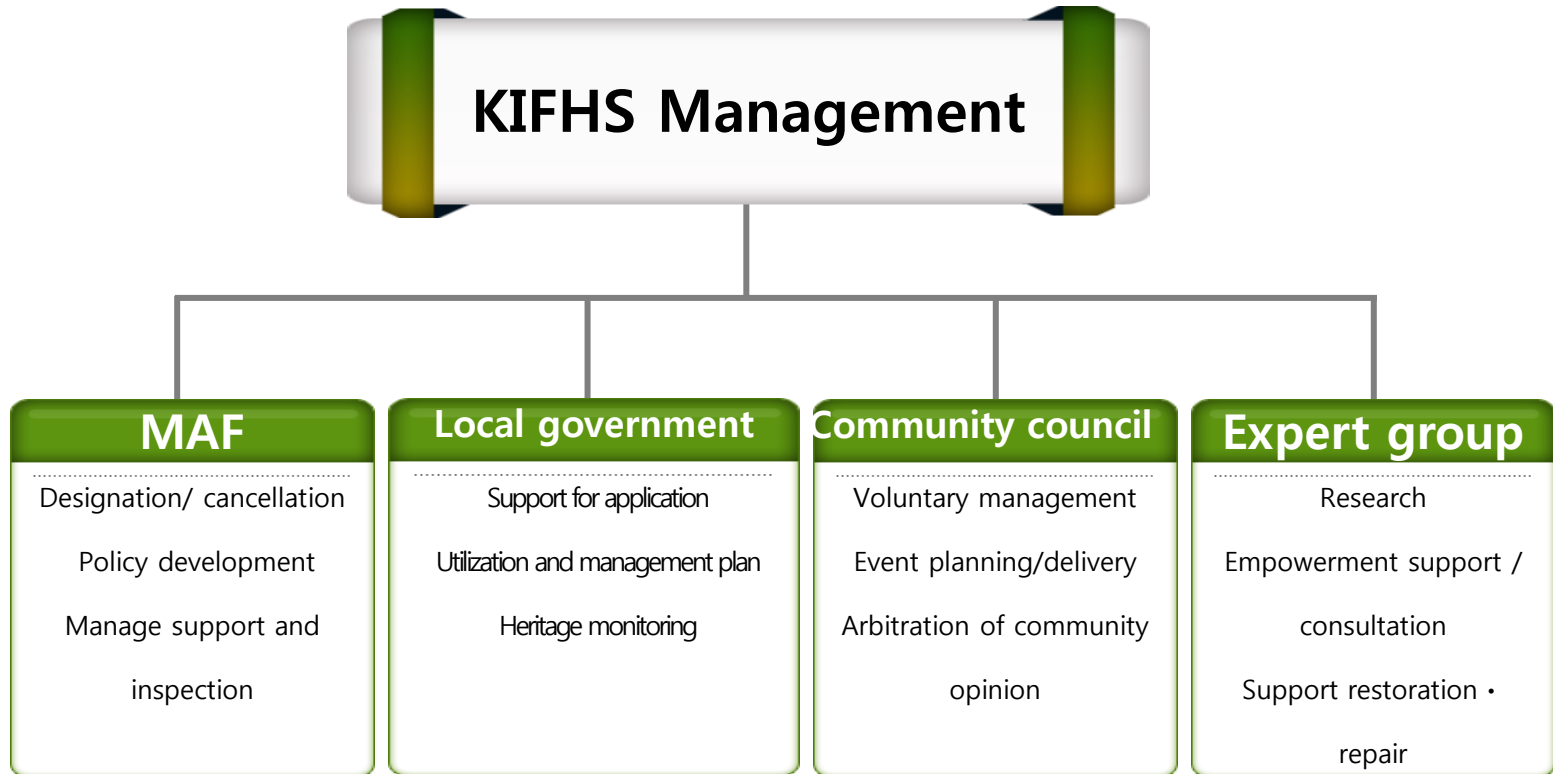
[Emblem]



[Applied graphic motif]

II. Promotion overview and the necessity

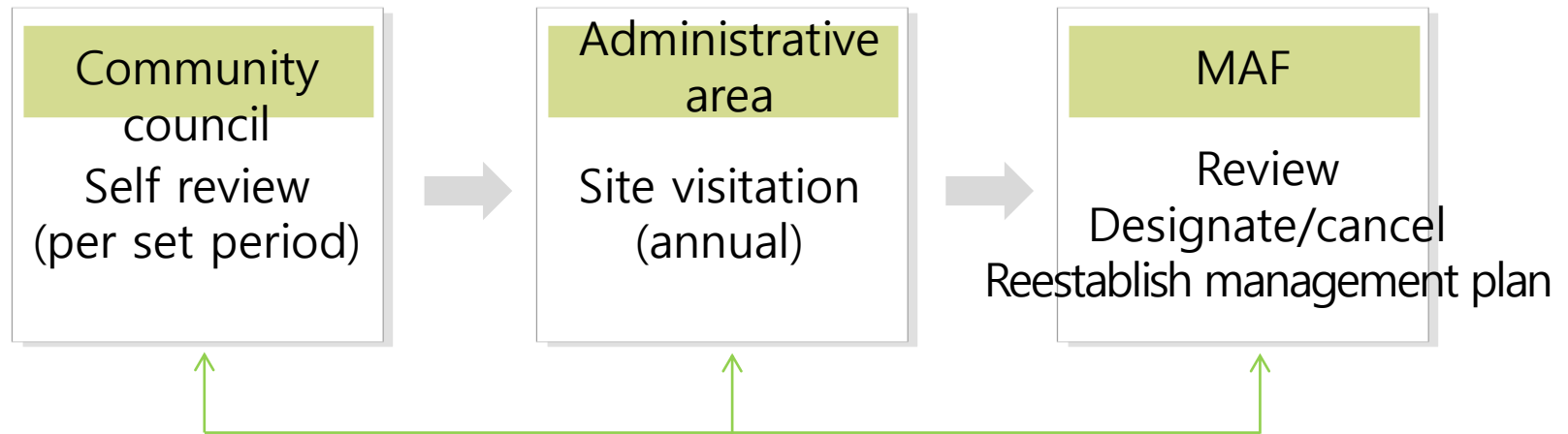
Division responsibility in Heritage management



II. Promotion overview and the necessity

KIFHS Monitoring system

Annual condition check up for Heritage is managed by mayor, governor of district head



● Essentials for condition monitoring

- Structural safety and occurrence damage on KIFHS
- Environmental changes effecting on KIFHS
- Condition of signage, warning signs and safety facility
- Overall terms in management of heritage

II. Promotion overview and the necessity



Progress in 2015

- 02/03/2015: Submit new clause of 'Regarding KIFHS' in 『Special Act to improve life quality of farmer/fishery 』
- 04/2015: KIFHS expert consultative meeting
- 08/04/2015: Amended enforcement regulation of 『 Special Act to improve life quality of farmer/fishery 』
- 09/2015: Image of KIFHS B.I. impression developed
- 09 – 10/2015: KIFHS promotion thru local government visits and presentations
- 10/07/2015: Establishment of notice for 『KIFHS designation and management criteria』
- 10/05 – 10/30/2015: KIFHS application submission
- 11/26/2015: Document review
- 12/09 – 12/11/2015: Site inspection
- 12/16/2015: Final decision and review

3. Future plan

Future Plan

III. Future plan



Planed projects for 2016

- Local level presentation for KIFHS: June 2016
- KIFHS Application process: ~ June 30, 2016
- KIFHS application review & site visit: ~ July 30, 2016
- KIFHS final review and decision: August 30, 2016
- KIFHS workshop among local agency and residents: October, 2016
- KIFHS conservation and utilization plan(local agency) : December, 2016

Reference



Reference

Present status of fishery resource

Type	Area	Heritage
	Taeon Chungcheongnamdo	Doksal
Feature	<ul style="list-style-type: none">➤ Traditional fishing method, utilizing tidal gap➤ 200 year tradition of Doksal method is still practiced with various hands-on program	
Image		

Reference

Present status of fishery resource

Type	Area	Heritage
	Sinan Jeollanamdo	Mud • Salt pond
Feature	<ul style="list-style-type: none">➤ The island size mud flat(450ha) takes 15% of national level mud<ul style="list-style-type: none">- Holds 900 marine organism, traditional fishing method(Pungeorim, Doksal)➤ 1st Korean solar salt pond over 41.6ha<ul style="list-style-type: none">- Produces 70% of solar salt in national level-Traditional flame treated salt making has advanced to solar salt production	
Image	 	

Reference

Present status of fishery resource

Type	Area	Heritage
	Geoje Gyoungsangnamdo	Gray mullet duri
Feature	<ul style="list-style-type: none">➤ Observe school of gray mullet from high spot(Mangnu), signal to fishing boat in the ocean then catch begins!➤ Over 100 year traditional gray mullet catching method	
Image	 	


Reference

Present status of fishery resource

Type	Area	Heritage
	Jangheung Jeollanamdo	Gaemaegi Fishing Ground
Feature	<ul style="list-style-type: none">➤ Traditional Gaemaegi fishing ground, fishing between tidal gap in holding 150 year history<ul style="list-style-type: none">- 35 household, length of net 4km, in 1,000ha size is the biggest in Korea➤ The only habitat of <i>zostera capricorni</i> in Korea	
Image	 	

Reference

Present status of fishery resource

Type	Area	Heritage resource
	Jeollanamdo	Laver cultivation
Feature	<p>➤ Laver cultivation in ideal area of half farming and half fishery post 1945. Traditional fishery system and community folk custom coexist in Heritage</p> <p>➤ National laver production ration in 2013: 77.5%(314,137M/T)</p>	
Image		

The background features a dark blue top and bottom section, separated by a light blue horizontal band. The central white area is decorated with numerous overlapping circles in various shades of blue, creating a bubbly effect. The text "Thank you very much!" is centered in this white area.

Thank you very much!